

ARTICLE

Received 19 Mar 2016 | Accepted 21 Sep 2016 | Published 23 Nov 2016

DOI: 10.1038/ncomms13357

OPEN

A principal component meta-analysis on multiple anthropometric traits identifies novel loci for body shape

Janina S. Ried and Janina M. Jeff *et al.*[#]

Large consortia have revealed hundreds of genetic loci associated with anthropometric traits, one trait at a time. We examined whether genetic variants affect body shape as a composite phenotype that is represented by a combination of anthropometric traits. We developed an approach that calculates averaged PCs (AvPCs) representing body shape derived from six anthropometric traits (body mass index, height, weight, waist and hip circumference, waist-to-hip ratio). The first four AvPCs explain >99% of the variability, are heritable, and associate with cardiometabolic outcomes. We performed genome-wide association analyses for each body shape composite phenotype across 65 studies and meta-analysed summary statistics. We identify six novel loci: *LEMD2* and *CD47* for AvPC1, *RPS6KA5/C14orf159* and *GANAB* for AvPC3, and *ARL15* and *ANP32* for AvPC4. Our findings highlight the value of using multiple traits to define complex phenotypes for discovery, which are not captured by single-trait analyses, and may shed light onto new pathways.

Correspondence and requests for materials should be addressed to M.M.-N. (email: martina.mueller@helmholtz-muenchen.de) or to R.L. (email: ruth.loos@mssm.edu).

[#]A full list of authors and their affiliations appears at the end of the paper.

Large-scale meta-analyses of genome-wide association studies (GWAS) have identified numerous loci for anthropometric traits, including more than 600 loci for height^{1–3} and over 160 loci for obesity-related outcomes, predominantly for commonly available traits such as body mass index (BMI)² and waist-to-hip ratio (WHR)^{4,5}, but also for body fat percentage⁶, childhood obesity⁷ and extreme and early onset obesity^{7–9}. While GWAS-meta-analyses have successfully revealed new loci, so far, all these studies have focused on one single anthropometric trait at a time and may not adequately capture differences in body shape between individuals who are similar in one trait but different in others. For example, two individuals may have the same BMI, but their WHR and/or height can differ substantially, so that each has a different body shape, which may translate into differences in disease risk^{10,11}. Several loci identified from previous single-trait GWAS on BMI, BMI-adjusted WHR (WHRadjBMI) and height are associated with more than one anthropometric trait^{1,2,4,12}. For example, the loci near *MC4R* and near *POMC/ADCY3* are each associated with BMI and height. However, the BMI-increasing allele of the near-*MC4R* locus is associated with increased height, whereas the BMI-increasing allele of the near-*POMC/ADCY3* locus is associated with reduced height^{1,2}. Thus, these loci are likely each associated with a more comprehensive body shape phenotype that is not captured by current GWAS that only consider anthropometric traits individually.

In recent years, several approaches have been developed to examine whether single-nucleotide polymorphisms (SNPs) influence multiple correlated traits associated with disease^{13,14}. However, most approaches test phenotypes separately and are

thus subject to multiple testing penalties that ultimately reduce the statistical power to detect genotype–phenotype relationships among correlated traits. One way forward is to apply a dimension reduction method to the traits of interest, such as principal component analysis (PCA) that combines multiple correlated traits into a set of uncorrelated outcomes principal components (principal components (PCs))^{15,16}. This method is very appealing to capture a composite phenotype, such as body shape. To date, no large-scale GWAS meta-analyses have been reported that aim to identify genetic loci associated with body shape based on simultaneous analysis of multiple anthropometric traits using PCA methods.

Therefore, the purpose of our study was twofold. First, we aimed to capture body shape in its multi-dimensional structure using PCs from several commonly available anthropometric traits. To allow the meta-analysis of summary statistics across a large number of cohorts, we developed an approach that calculates averaged PCs (AvPCs) that robustly represent body shape across a wide range of studies. Second, using this approach, we aimed to identify genetic loci associated with body shape based on the AvPCs in 65 studies of the GIANT Consortium, including >170,000 individuals.

Results

Defining composite phenotypes of body shape. As basis for our analysis of body shape we used six anthropometric traits: BMI, WHR, height, weight, hip and waist circumference. First, we performed separate PCA in a subset of 20 large population-based studies (up to 82,355 individuals, Supplementary Table 1) and compared the loadings of the anthropometric traits in each PC between studies. Visual inspection of PCA loadings showed high concordance across studies (Supplementary Fig. 1) and between men and women. Between-study variation in variance explained by the PCs was small (Supplementary Fig. 1, Supplementary Table 2). On average, the first four PCs explained more than 99% of the variance (Fig. 1, Supplementary Table 2), and were therefore pursued as body shape outcomes for our gene-discovery effort. Given the across-study stability of PCs, we derived average loadings that were calculated as weighted means of loadings from all 20 population-based studies that were analysed in this step. We used these average loadings to calculate average principal components (AvPCs) as targets in each of the GWAS included in the first and second stage. In other words, the phenotypes used for genome-wide association were constructed in a consistent way across studies, such that the summary statistics could be meta-analysed.

Each AvPC represents a specific composition of the six anthropometric traits and thus captures a specific aspect of body shape (Fig. 1). The first AvPC, which explains on average 64.4% of the variation in all traits, shows high loadings for all traits, except for height. The loadings are in the same direction; meaning that the AvPC captures inter-individual variation in either increased or decreased BMI, weight, WHR, hip and waist circumference. Therefore, variation in this PC seems to predominantly capture overall adiposity. The second AvPC, which explains 18.5% of the variation, is characterized by particularly high but opposite loadings on height and WHR. In other words, AvPC2 captures variation in a composite phenotype that represents tall individuals with a small WHR or, vice versa, short individuals with a large WHR. The third AvPC, explaining 13.8% of the variation, also shows predominantly high loadings on height and WHR but in the same direction, with an opposite loading of nearly the same size on hip circumference. Given these loadings, AvPC3 discriminates mainly between tall individuals with a high WHR resulting from a smaller hip circumference on one extreme and short individuals with low WHR, and a larger

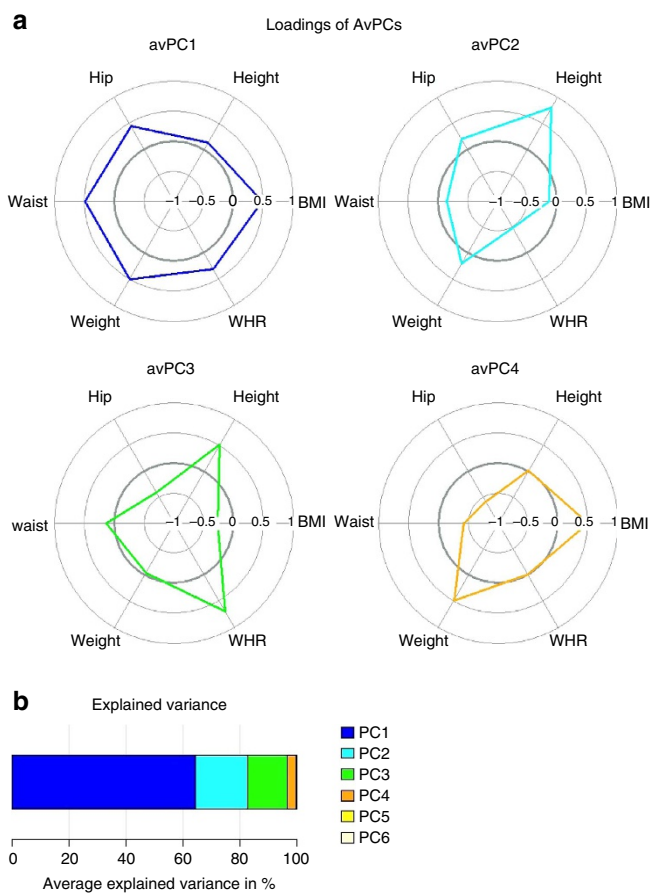


Figure 1 | Loadings and explained variance of AvPCs for body shape. (a) Loadings of AvPCs, and (b) explained variance of AvPCs for body shape.

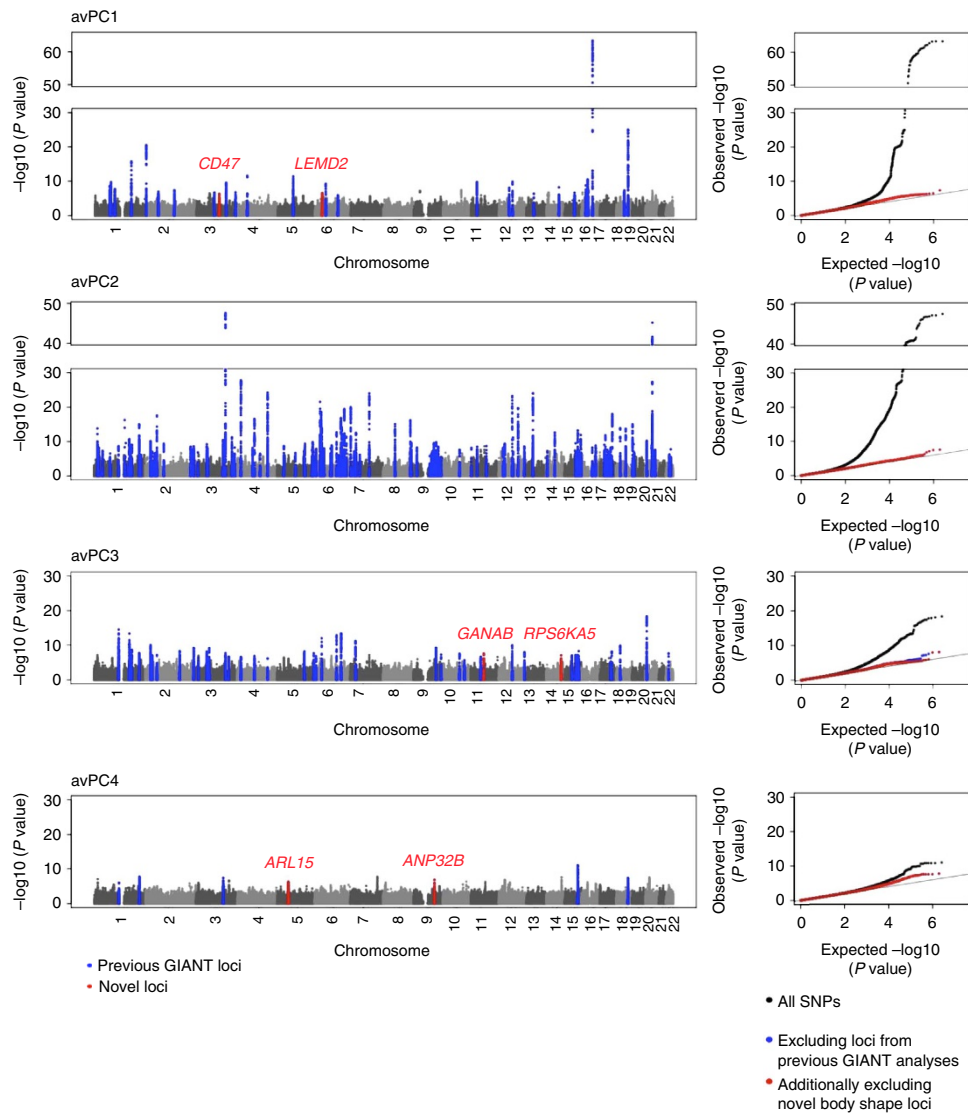


Figure 2 | Manhattan and QQ-plots of association results on AvPCs of body shape. *P* values of the first stage meta-analysis are given in the Manhattan and QQ-plots. All genome-wide significant loci are highlighted.

hip circumference on the other extreme. The fourth AvPC explains on average 3% and is harder to interpret. It displays high loadings on BMI and body weight, and opposite loadings of a similar size on hip and waist circumference. These could be interpreted as a phenotype ranging between high BMI and weight, with relatively small hip and waist circumference on the one hand and low BMI and weight but large waist and hip circumference on the other hand.

Consistent with the individual anthropometric traits, the four AvPCs that describe body shape are also heritable. Using data from four isolate populations ($n=4,000$), we estimated that AvPC2 has the highest heritability (75–80%), consistent with the fact that height is the main contributing trait to this AvPC with a strong genetic component¹. The heritability of AvPC1 (35–50%), AvPC3 (50–75%) and AvPC4 (25–50%) were moderately high and similar to the heritability for individual anthropometric traits¹⁷ (Supplementary Fig. 2). From a clinical perspective, each of the four AvPCs exhibit known correlations with cardio-metabolic traits (Supplementary Fig. 3), including diastolic blood pressure, systolic blood pressure, total cholesterol, low-density lipoprotein cholesterol, high-density lipoprotein cholesterol and total triglycerides levels.

Genomic discovery of body shape composite phenotypes. We performed a two-staged meta-analysis to identify genetic loci that are associated with the four AvPCs (Supplementary Table 3, Supplementary Table 4). In the first stage, a meta-analysis of 43 studies with imputed genome-wide SNP data including more than 133,000 individuals identified SNPs in 385 loci across the four AvPCs (56 loci for AvPC1, 205 for AvPC2, 89 for AvPC3 and 35 for AvPC4) that showed promising association (P value $< 5 \times 10^{-6}$) for at least one of the four AvPCs (Fig. 2, Supplementary Fig. 4). Lead SNPs (and proxies; see ‘Methods’ section) of each locus were taken forward for validation in a second stage, including data from more than 39,900 individuals from 22 studies of which 12 studies had genotypes from the Illumina CardioMetabochip and 10 studies had imputed genome-wide SNP data. In the combined analyses, consisting of the first and second stage studies, the association of 207 of the 385 loci reached genome-wide significance (P value $< 5 \times 10^{-8}$) (31 for AvPC1, 124 for AvPC2, 45 for AvPC3 and 7 for AvPC4; Fig. 2, Fig. 3, Supplementary Fig. 4, Supplementary Table 6), of which 16 loci were identified for two AvPCs and one showed significant association with three AvPCs (Supplementary Fig. 7, Supplementary Table 5) resulting in a total of 189 loci with

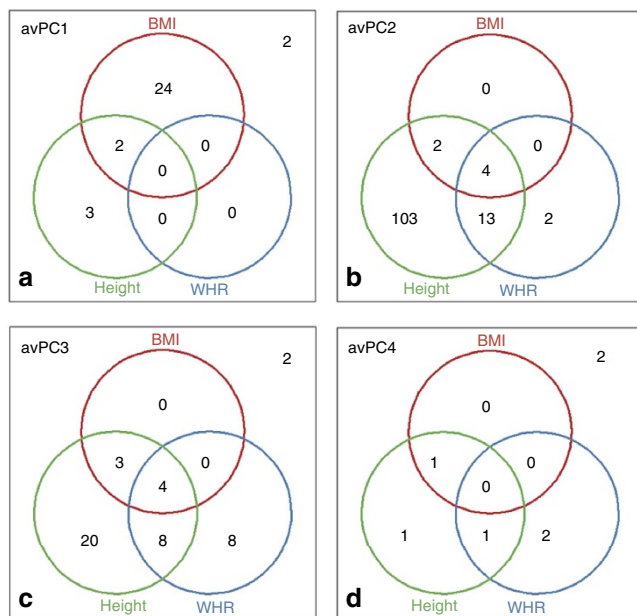


Figure 3 | Number of loci associated with AvPCs and known from previous GIANT analyses on BMI, WHR or height. (a–d) corresponds to each AvPC respectively. The Venn diagrams specify for each AvPC how many significantly associated loci (promising P value in the first stage meta analysis ($<5 \times 10^{-6}$) and genome wide significant in first and second stage combined analysis ($<5 \times 10^{-8}$)) are known from previous GIANT analysis on BMI, height or WHR. In the upper right corner of each plot the number of loci is given that are not known from previous GIANT analyses.

association to at least one AvPC. To determine whether the loci we identified were independent of the loci previously found for BMI, WHRadjBMI and height, we performed conditional analyses on SNPs reported in previous GIANT-GWAS publications on BMI, WHRadjBMI and height^{1,2,4,5,18,19}. A locus was considered independent of reported findings if the P value in the analyses conditioned on all previously identified loci remained suggestive (P value $<5 \times 10^{-6}$). In total, 183 loci had already been established for BMI, WHRadjBMI or height (Fig. 3, Supplementary Fig. 7), whereas six loci had not previously been identified for association with conventional anthropometric traits; two for AvPC1, two for AvPC3 and two for AvPC4 (Table 1, local association plots given in Supplementary Fig. 5). For these six novel loci, the results of the lead SNPs were checked in previously performed GWAS meta-analyses on anthropometric and cardio-metabolic traits (Supplementary Table 7).

Results for AvPC1. For AvPC1, we identified 31 genome-wide significant loci, of which two were novel (upstream of *LEMD2* and *CD47*). Of the 29 previously established loci, 24 have been associated with BMI only¹⁸, 3 with height only^{1,3}, while two loci have been reported for associations with both BMI and height^{3,18} (Fig. 3a). While both novel loci showed some evidence of association with BMI in the latest GIANT-GWAS ($n > 339,000$; $P < 7.2 \times 10^{-3}$; Table 1), they did not reach genome-wide significance. The lead SNP (rs943466) 7 kb upstream of *LEMD2* has been reported to be associated with expression of *LEMD2* in liver ($P = 1.66 \times 10^{-9}$)^{20,21}. Another variant in *LEMD2* (rs2296743 at 8 kb from our lead SNP rs943466; $r^2 = 0.2$, $D' = 1.0$) was previously reported for its promising association (P value $= 8 \times 10^{-6}$) with energy intake at dinner in a small GWAS of 815 Hispanic children²². The lead SNP (rs7640424) for the second novel locus was located in an enhancer region 10 kb upstream of *CD47* (refs 23,24), which encodes a membrane

protein that might be involved in signal transduction and membrane transport²⁵. No genome-wide significant associations have been reported for the lead SNP or other SNPs in the *CD47* gene before^{23–25}. However, a recent study revealed a link to diet-induced obesity in mice and suggests *CD47* as a potential drug-target to combat obesity and metabolic complications^{26,27}.

Results for AvPC2. For AvPC2, we identified no novel loci. Almost all ($n = 122$) of the 124 loci associated with AvPC2 had previously been identified for height¹ (Fig. 3b), which is consistent with AvPC2's high loadings on height and opposite loadings on WHR. Of these 122 loci, 103 were reported for association to height only, whereas of the 19 remaining loci, 4 were previously associated with height, BMI and WHRadjBMI, 2 loci were reported for height and BMI and 13 loci overlapped with height and WHR. The two AvPC2 loci that did not associate with height were previously identified for WHRadjBMI¹⁹.

Results for AvPC3. We identified 45 loci that reached genome-wide significance for AvPC3, of which 2 were novel. Consistent with the loadings of AvPC3, 43 of the associated loci had been reported before for height¹ or WHR^{4,19} (Fig. 3c). The lead SNP of the first novel locus rs7492628, upstream of the genes *RPS6KA5* (> 20 kb) and *C14orf159* (> 30 kb), failed to reach genome-wide significance in previous WHRadjBMI GWAS (P value $= 9.3 \times 10^{-8}$) and was nominally associated with extreme obesity risk (P value $= 7.26 \times 10^{-5}$)²⁸. The lead SNP of the other novel locus, *GANAB*, rs7949030, showed some evidence of association with WHRadjBMI in the latest GIANT GWAS (P value $= 3.3 \times 10^{-6}$) and was reported to be an eQTL for several other genes²¹: In monocytes, regulation of *MIR3654*, *EEF1G*, *EML3*, *BSCL2*, *HNRNPUL2-BSCL2*, *LRRN4CL* was found^{29–31}. *BSCL2* is of interest, as it is a known candidate gene for the most severe lipodystrophy phenotype³². In blood rs7949030 was found to be an eQTL of *HNRNPUL2-BSCL2*, *AHNAK*, *LRRN4CL* and *INTS5* (refs 33,34), while in skin and adipocytes it was found as an eQTL for *EML3* (refs 30,31,35).

Results for AvPC4. Seven loci were identified for AvPC4, of which five had been previously reported; one for BMI and height, one for WHR and height, one for height only and two for WHR only^{1,3,4,36} (Fig. 3). The lead SNPs of the two novel loci identified with AvPC4 were both intronic, in *ARL15* and *ANP32*. The allele associated with increased AvPC4 of the lead SNP (rs4865796) in *ARL15* was moderately associated with higher BMI (P value $= 1.6 \times 10^{-4}$), increased adiponectin levels (P value $= 4.2 \times 10^{-6}$ ADIPOGEN³⁷) and decreased risk of diabetes (P value $= 1.8 \times 10^{-5}$, DIAGRAM³⁸). This SNP was associated with fasting insulin (rs4865796, $P = 2.1 \times 10^{-8}$ and 2.2×10^{-12} after adjustment for BMI³⁹). Other nearby SNPs in high linkage disequilibrium (LD), have previously been reported for associations with BMI-adjusted adiponectin levels (rs6450176/rs4311394, $r^2 = 0.087$, $D' = 0.87$ (refs 37,40)), high density lipoprotein C (HDL-C) levels (rs6450176 (refs 41,42)) and risk of type 2 diabetes (rs702634, $r^2 = 1.0$, $D' = 1.0$ (ref. 38)). A duplication in *ARL15*, tagged by rs16992296) was previously found to be associated with increased risk of childhood obesity in European and African Americans⁴³. However, this duplication is independent of the association we found for rs4865796-*ARL15* and AvPC4, which is in low LD ($r^2_{EUR} = 0.065$) with the duplication (represented by rs16992296), located 168 kb upstream. The lead SNP (rs7855432) of the second locus, *ANP32B*, was moderately associated with height (P value $= 5.5 \times 10^{-6}$)¹. A SNP in high LD (rs4743150 $r^2 = 0.95$, $D' = 1.0$) was reported to be promisingly associated with coronary heart disease risk (P value $= 5 \times 10^{-6}$)⁴⁴.

Table 1 | Association results for novel loci with avPC of body shape.

trait	SNP (lead SNP)	Next gene	Effect/other allele	EAF*	1st stage up to 133,376 samples	2nd stage up to 39,904 samples	1st + 2nd stage combined up to 173,278 samples			Conditioned analysis on all GIANT tophits		P value of SNPs in GIANT analysis†			P value of SNPs in GIANT analysis‡		
					P value	P value	beta (sebeta)	P value	N	beta (sebeta)	P value	BMI	Height	WHR	BMI	Height	WHR
avPC1	rs7640424	CD47	C/T	69%	5.40E-07	0.0015	0.05 (0.008)	3.18E-09	171,544	0.05 (0.01)	5.80E-07	0.0072	0.74	0.25	2.28E-06	0.28	0.85
avPC1	rs943466 (rs2281819)	LEMD2	G/A	76%	6.39E-07	0.016	0.049 (0.009)	3.47E-08	172,174	0.049 (0.01)	7.28E-07	2.7E-04	0.045	0.54	9.34E-06	0.75	0.25
avPC3	rs7949030	GANAB	G/A	38%	2.74E-08	0.11	0.024 (0.004)	5.58E-09	139,195	0.025 (0.004)	6.36E-09	0.082	0.80	1.4E-04	0.54	0.041	3.3E-06
avPC3	rs7492628	RPS6KA5	G/C	30%	8.75E-08	0.13	0.024 (0.004)	1.90E-08	139,874	0.024 (0.004)	7.93E-08	0.064	0.62	4.9E-05	0.0050	0.58	9.3E-08
avPC4	rs4865796 (rs1664781)	ARL15	G/A	32%	5.59E-07	0.011	0.008 (0.001)	2.25E-08	172,517	0.008 (0.002)	7.25E-07	5.1E-05	0.034	0.40	1.6E-04	0.020	0.84
avPC4	rs7855432	ANP32B	G/T	80%	1.40E-07	0.17	0.01 (0.002)	4.06E-08	140,805	0.01 (0.002)	1.78E-07	0.33	0.046	0.49	0.32	5.5E-06	0.91

The association results for the first stage, second stage and first and second stage combined analysis is given for all six loci that were genome wide significantly associated (promising P value in the first stage meta analysis ($<5 \times 10^{-6}$) and genome wide significant in first and second stage combined analysis ($<5 \times 10^{-8}$)) with one of the avPCs and novel. Moreover, the P values of the analysis conditioned on all tophits from the recent GIANT publications on BMI, height and WHR.
 *EAF is mean of EAF of all studies in the first stage meta analysis.
 †All tophits of the GIANT analysis published before 2014 (refs 3,6).
 ‡All tophits of the GIANT analysis unpublished and/or published after 2014 (refs 1,2,4).

Discussion

We developed a PCA-based approach to capture variation across multiple traits simultaneously in a uniform way across multiple studies. Resulting AvPCs are a robust cross-phenotype representation allowing their use in large-scale meta-analyses. We assessed this approach to capture body shape based on six individual anthropometric traits and identified six novel loci that were not identified before in much larger GWAS-meta-analyses for BMI, WHRadjBMI and height^{1,2,4}. Our findings suggest that the body shape composite phenotype, assessed by AvPCs, represents information that is not fully captured by individual (anthropometric) traits. Application of this method to other related traits, for example, in immune disease, different types of cancer, cardiometabolic traits, or other correlated traits might comparably reveal new loci, and potentially new pathways, that have not been identified in single-trait GWAS.

The AvPCs are combinations of different anthropometric traits and therefore capture more complex body shape phenotypes than the single traits. AvPC1, representing overall adiposity, and AvPC2, representing height with respect to WHR, are the most important contributors to body shape, explaining on average more than 80% of the variation. More specific body shape types were captured by AvPC3 and AvPC4 and were defined by impact of height and WHR (AvPC3) or BMI, waist and hip (AvPC4). Our initial analyses demonstrated that the loadings are stable across studies, study designs and between men and women. Moreover, we have shown that the AvPCs are heritable traits and correlated with cardiometabolic traits and risk factors.

To further demonstrate the strength of this approach, we compared total variance explained of single traits and AvPCs by SNPs previously identified in single-trait GWAS (for BMI, WHRadjBMI, height^{1,2,4}). For example, the 97 loci that have been reported for association in the latest BMI single-trait GWAS (N ~ 340,000) explain 8.7% of the variation in AvPC1, whereas they explained only 2.68% of the variation in BMI². These data indicate that our PC-defined phenotype for overall body size (AvPC1) captures a more composite phenotype compared with BMI as a single-trait. Explaining more of the variance with the same genetic variants as previous single-trait studies in our composite phenotype shows promise to update and inform existing methods.

So far, typical GWAS have tested for association of genetic variants with anthropometric traits, one trait at a time. We define ‘body shape’ as a composite of multiple traits defined by PCs. We first performed PC-analyses in representative population-based

studies and averaged PC loadings across these studies (AvPCs). We subsequently use these AvPCs to calculate PCs in all participating studies. This approach ensures that PCs are calculated in a uniform manner across all studies, thus facilitating subsequent meta-analyses. This approach could be applied to capture genetic variation across related traits that is currently not captured by single-trait GWAS (for example, in the context of autoimmune disease, blood traits, lipid levels, different cancers and so on.).

Consistent with published anthropometric traits^{10,11,17}, the derived AvPCs are heritable and correlated with clinically relevant outcomes. We identified additional loci, despite a much smaller sample size compared with the latest single-trait GWAS analyses for BMI, height and WHRadjBMI^{1,2,4}. This suggests that the AvPC method captures phenotype information that is not captured by single-trait analyses and associated loci may highlight biological pathways that are not revealed with single-trait associated loci only.

Even though our approach has several advantages, it is not meant to replace single trait GWAS analyses. A number of loci that were identified in the latest single-trait GWAS were not identified in our body shape GWAS; that is, we identified 124 loci (or 14.2%) of the 837 loci recently reported in the GIANT single-trait meta-analyses (Supplementary Fig. 6). This may be due to the fact that these recent single-trait GWAS meta-analyses were at least twice as large as the current body shape GWAS. However, even when we compare the number of identified loci in earlier GWAS meta-analyses, which are of similar size as the current body shape GWAS, we do not identify all previously reported loci for single traits. Perhaps this is most obvious with height (largely representative of AvPC2), where we only identified 91 (13.1%) of 697 loci identified for height. This is in part due to the fact that a conservative definition for linkage disequilibrium was applied ($r^2 > 0.8$), lack of power due to sample size for SNPs of modest effects, or perhaps the AvPCs introduces noise to purely single traits such as height. Consistent with this finding, we also observe that some single traits also explain more of the variance of body shape compared with AvPCs. Our comparison of the variance explained between previous single-trait meta-GWAS and our AvPCs support this evidence for overlapping associated variants. Since AvPC2 represents largely a single trait, height, with large height loadings we were unable to explain more of the variance. In fact we explained less of the variance, which is likely due to noise introduced using this composite AvPCs phenotype. This observation is also evident for variance in body shape explained

by height compared with AvPC3 and AvPC4, but is in contrast to BMI, a complex trait comprised of multiple anthropometric measurements, which explains less variance in body shape compared with AvPC3 and AvPC4. It is important to emphasize our approach is most informative for complex traits such as BMI that are derived from a series of other traits. We believe that using PC space to define complex traits is useful for the detection of loci involved in multiple pathways that might go undetected in a single trait setting.

We have developed a new strategy that applies a PCA approach in a meta-analysis setting to combine composite phenotypes in a harmonized way across multiple studies. We successfully applied this approach to anthropometric traits to capture body shape. The derived combined anthropometric traits (AvPCs) were shown to be heritable and correlated to cardio-metabolic traits. Large-scale GWAS meta-analyses of the AvPCs identified six new loci that were not identified by previous single-trait GWAS that were twice as large in samples size. This PCA approach could maximize gene discovery for other correlated traits, such as cancers, immune disease, hematologic traits and so on, and may identify genes that point towards shared physiological pathways.

Methods

Study description. In the first stage analyses, 43 studies participated (133,376 individuals) that had HapMap 2 imputed genome-wide data available. A subset of 20 studies with unrelated individuals was used for calculation of average loadings. Second stage analyses were performed in 10 studies (7,734 individuals) with genome-wide data that became available after the first stage and 12 studies (32,170 individuals) with Cardio-MetaboChip (by Illumina) data (number of included studies and individuals given in Supplementary Table 3). Details on study phenotypes, genotyping and imputation of each study are given in the Supplementary Tables 8 and 9, respectively.

Ethics statement. All study participants gave written informed consent and ethic committees approved all studies. The ethic statement of each study is given in the study specific acknowledgements.

Calculation of average loadings. In 20 independent studies (Supplementary Table 1) with unrelated participants PCAs were performed on six anthropometric traits (BMI, height, hip, waist, weight and WHR). Each study performed a PCA on the standardized residuals of the anthropometric traits adjusted for age and gender. The same analyses were done for men and women separately with residuals adjusted for age only. The result of the PCA in each study is a set of six PCs that are orthogonal linear combinations of the six anthropometric traits. In other words each PC is a weighted sum of the six transformed anthropometric traits and independent of the other PCs. The weights of each trait per PC are called loadings. Each study also calculated the explained variance per PC. The loadings and explained variances were comparable for all studies (Supplementary Fig. 1 (1)).

With the intention to create phenotypes that are identically constructed in all studies, the results of single study PCAs were used to deduce the average loadings. This approach is reasonable as the loadings of the study specific PCAs were comparable. With the use of the single study correlation matrices a combined average correlation matrix was derived (weighted sum divided by number of individuals). This average correlation matrix is then used as basis for a PCA. The loadings that result from this PCA are called average loadings (Fig. 1a) and Supplementary Table 2). This was performed for men, women and all individuals combined, however ultimately we used combined loadings for primary results reported in the manuscript. Sex specific results are reported in the Supplementary Material. The average loadings and explained variance were comparable to the study specific loadings and explained variances (Supplementary Fig. 1).

Heritability analyses. Heritability of the avPCs was calculated within four population isolates, CROATIA-Vis ($n = 909$), CROATIA-Korcula ($n = 842$), CROATIA-Split ($n = 499$) and ORCADES ($n = 866$) using the 'polygenic' function of the GenABEL package for R^{45} .

Average principal components as body shape phenotype. The average loadings were used in each study to calculate the AvPCs in a standardized way. Therefore, the average loadings were distributed together with an R-script (<http://www.r-project.org/>) that calculated the AvPCs as linear combination of residuals of the study phenotypes with the use of the average loadings. This was done for men and women separately and additionally for combined in studies with relatedness

structure. As the first four PCs explain on average more than 99% of the variance (Fig. 1b) we decided to limit all analyses to these four PCs.

Stage 1 analyses. GWAS on the first four AvPCs were calculated for men and women separately in studies of unrelated samples and combined for studies with related samples with an adjustment for study site when necessary. All studies of the first stage analyses used HapMap 2 imputed genome-wide data. GWAS results underwent extensive quality control and study-wise filtering (call rate $> 95\%$, P value (HWE) $> 10^{-6}$, imputation quality, minor allele count (MAC) > 3). The meta analyses of GWAS results for the first four AvPCs we combined sex-stratified results for studies with unrelated individuals and unstratified GWAS results for studies with relatedness individuals. Meta analyses were performed with METAL⁴⁶ using fixed effects inverse variance-weighted method. Single study and the meta analysis P values were corrected by the genomic control inflation factor λ (meta analysis λ before correction: $\lambda(PC1) = 1.29$, $\lambda(PC2) = 1.407$, $\lambda(PC3) = 1.236$, $\lambda(PC4) = 1.136$). Results were limited to SNPs that are in HapMap 2 and had results for more than 30,000 individuals. Heterogeneity analysis was performed with METAL. Each AvPC all SNPs with a promising P value (P value $< 5 \times 10^{-6}$) were identified in combined analyses. To identify promising loci clustering (LD > 0.01 , distance $< 1,000$ kb) with PLINK⁴⁷ based on HapMap 2 genotypes was performed. All leading SNPs per clump for AvPCs were taken forward to second stage analyses and named promising SNPs in this manuscript.

Two SNPs that were promising for the first principal component had very low heterogeneity P values (rs10847678 (P value(het) = 8.8×10^{-152}), rs13296358 (P value(het) = 5.4×10^{-67})). For both SNPs the effect was driven only by a single study and no other SNP in high LD had a promising P value. Therefore, these two SNPs were removed from further analyses.

Stage 2 Analyses. As mentioned above for second stage analyses a mixture of studies with genome-wide SNP data and MetaboChip genotypes was available. Some of the leading SNPs of the first stage analyses were not genotyped on the MetaboChip. To increase the power for all promising SNPs of each AvPC proxies were defined that were all SNPs close to promising SNPs (distance < 500 kb), in high LD (LD > 0.9) and available in more than 70% of the individuals of the second stage. Results of the second stage analyses underwent the same quality control as first stage results.

Combined analyses. The combined analyses of all first and second stage GWAS was performed with METAL³⁵ with inverse variance based method. Results for men and women were combined as described for the first stage meta-analyses. All promising loci for which at least one proxy had a genome-wide significant P value in the combined analysis were named genome-wide significant loci and the best SNP of the combined analyses (largest absolute beta) was reported as topSNP of this locus.

Novel loci - conditional analyses and look-ups in previous GIANT analyses.

Two analyses were performed to distinguish between genome-wide significant body shape loci that are known from previous GWAS on BMI, height and WHR and novel body shape loci. First, conditional analyses were performed. We used the 226 reported topSNPs (32 BMI, 180 height, 14 WHR) of published GIANT analyses on BMI, height and WHR^{1,2,4} to perform conditional analyses of the first stage meta-analyses using GCTA^{15,48}. The results of this analysis were then analysed conditioned on 843 topSNPs (97 BMI, 697 height, 49 WHR) of the published GIANT analyses^{1,2,4}. To identify the overlap of the results for AvPCs with the single anthropometric traits, the same conditional analyses were performed for BMI, height and WHR separately. For calculation of the LD-structure genotype data from KORA F4 was used. Two topSNPs of the unpublished GIANT results had to be removed before analyses as they were in high correlation with two other topSNPs. If the body shape topSNPs were independent loci identified by previous GIANT analyses, the P value should stay promising (P value $< 5 \times 10^{-6}$) in both conditional analyses. Second, we checked by look-ups if those genome-wide significant SNPs that are independent from the previously reported topSNPs were not genome-wide significant (P value $> 5 \times 10^{-8}$) in GIANT analyses^{1,2,4}.

Genome-wide significant SNPs are named *novel SNPs* if they fulfil the following conditions:

- P value of conditioned analyses on topSNPs reported by previous GIANT analyses (on BMI, height, WHR) remained promising (P value $< 5 \times 10^{-6}$).
- P value in previous GIANT analyses (on BMI, height, WHR) was not genome-wide significant (P value $> 5 \times 10^{-8}$).

Pleiotropic effects. For identification of potential pleiotropic effects several look-ups in various large-scale consortia on different phenotypes were performed, including GIANT, DIAGRAM and MAGIC, all references are given in the results table of the look-ups (Supplementary Table 7). For comparison of effect directions

the loadings of each AvPC have to be considered. For example AvPC2 includes height with a positive loading and BMI with a negative loading. That means an increasing effect on AvPC2 means an increasing effect on height but a decreasing effect on BMI.

Further Analyses. PCA, further analyses and plots were generated with R (<http://www.r-project.org/>) if not stated otherwise. Apart from the GCTA analyses, which uses LD structure of KORA F4, all LD analyses were performed in PLINK based on HapMap 2 (CEU) genotypes. For comparison of findings between loci from different AvPCs two loci are assumed to be identical if the topSNPs are in high LD ($LD > 0.8$).

Data availability. Summary statistics of all analyses can be downloaded from: <https://www.broadinstitute.org/collaboration/giant/>

References

- Wood, A. R. *et al.* Defining the role of common variation in the genomic and biological architecture of adult human height. *Nat. Genet.* **46**, 1173–1186 (2014).
- Locke, A. E. *et al.* Genetic studies of body mass index yield new insights for obesity biology. *Nature* **518**, 197–206 (2015).
- Lango Allen, H. *et al.* Hundreds of variants clustered in genomic loci and biological pathways affect human height. *Nature* **467**, 832–838 (2010).
- Shungin, D. *et al.* New genetic loci link adipose and insulin biology to body fat distribution. *Nature* **518**, 187–196 (2015).
- Liu, C. T. *et al.* Genome-wide association of body fat distribution in African ancestry populations suggests new loci. *PLoS Genet.* **9**, e1003681 (2013).
- Kilpelainen, T. O. *et al.* Genetic variation near IRS1 associates with reduced adiposity and an impaired metabolic profile. *Nat. Genet.* **43**, 753–760 (2011).
- Bradfield, J. P. *et al.* A genome-wide association meta-analysis identifies new childhood obesity loci. *Nat. Genet.* **44**, 526–531 (2012).
- Wheeler, E. *et al.* Genome-wide SNP and CNV analysis identifies common and low-frequency variants associated with severe early-onset obesity. *Nat. Genet.* **45**, 513–517 (2013).
- Meyre, D. *et al.* Genome-wide association study for early-onset and morbid adult obesity identifies three new risk loci in European populations. *Nat. Genet.* **41**, 157–159 (2009).
- Myint, P. K., Kwok, C. S., Luben, R. N., Wareham, N. J. & Khaw, K. T. Body fat percentage, body mass index and waist-to-hip ratio as predictors of mortality and cardiovascular disease. *Heart* **100**, 1613–1619 (2014).
- InterAct, C. *et al.* Long-term risk of incident type 2 diabetes and measures of overall and regional obesity: the EPIC-InterAct case-cohort study. *PLoS Med.* **9**, e1001230 (2012).
- He, M. *et al.* Meta-analysis of genome-wide association studies of adult height in East Asians identifies 17 novel loci. *Hum. Mol. Genet.* **24**, 1791–1800 (2015).
- Pendergrass, S. A. *et al.* Phenome-wide association study (PheWAS) for detection of pleiotropy within the Population Architecture using Genomics and Epidemiology (PAGE) Network. *PLoS Genet.* **9**, e1003087 (2013).
- Denny, J. C. *et al.* PheWAS: demonstrating the feasibility of a phenome-wide scan to discover gene-disease associations. *Bioinformatics* **26**, 1205–1210 (2010).
- Yang, J. *et al.* Conditional and joint multiple-SNP analysis of GWAS summary statistics identifies additional variants influencing complex traits. *Nat. Genet.* **44**, S1–S3 (2012).
- Aschard, H. *et al.* Maximizing the power of principal-component analysis of correlated phenotypes in genome-wide association studies. *Am. J. Hum. Genet.* **94**, 662–676 (2014).
- Polderman, T. J. *et al.* Meta-analysis of the heritability of human traits based on fifty years of twin studies. *Nat. Genet.* **47**, 702–709 (2015).
- Speliotes, E. K. *et al.* Association analyses of 249,796 individuals reveal 18 new loci associated with body mass index. *Nat. Genet.* **42**, 937–948 (2010).
- Heid, I. M. *et al.* Meta-analysis identifies 13 new loci associated with waist-hip ratio and reveals sexual dimorphism in the genetic basis of fat distribution. *Nat. Genet.* **42**, 949–960 (2010).
- Innocenti, F. *et al.* Identification, replication, and functional fine-mapping of expression quantitative trait loci in primary human liver tissue. *PLoS Genet.* **7**, e1002078 (2011).
- Arnold, M., Raffler, J., Pfeufer, A., Suhre, K. & Kastenmuller, G. SNIpA: an interactive, genetic variant-centered annotation browser. *Bioinformatics* **31**, 1334–1336 (2015).
- Comuzzie, A. G. *et al.* Novel genetic loci identified for the pathophysiology of childhood obesity in the Hispanic population. *PLoS ONE* **7**, e51954 (2012).
- Welter, D. *et al.* The NHGRI GWAS Catalog, a curated resource of SNP-trait associations. *Nucleic Acids Res.* **42**, D1001–D1006 (2014).
- Beck, T., Hastings, R. K., Gollapudi, S., Free, R. C. & Brookes, A. J. GWAS Central: a comprehensive resource for the comparison and interrogation of genome-wide association studies. *Eur. J. Hum. Genet.* **22**, 949–952 (2014).
- Li, M. J. *et al.* GWASdb: a database for human genetic variants identified by genome-wide association studies. *Nucleic Acids Res.* **40**, D1047–D1054 (2012).
- Soto-Pantoja, D. R., Kaur, S. & Roberts, D. D. CD47 signaling pathways controlling cellular differentiation and responses to stress. *Crit. Rev. Biochem. Mol. Biol.* 1–19 (2015).
- Maimaitiyiming, H., Norman, H., Zhou, Q. & Wang, S. CD47 deficiency protects mice from diet-induced obesity and improves whole body glucose tolerance and insulin sensitivity. *Sci. Rep.* **5**, 8846 (2015).
- Paternoster, L. *et al.* Genome-wide population-based association study of extremely overweight young adults—the GOYA study. *PLoS ONE* **6**, e24303 (2011).
- Zeller, T. *et al.* Genetics and beyond—the transcriptome of human monocytes and disease susceptibility. *PLoS ONE* **5**, e10693 (2010).
- Wang, H. D. *et al.* DNA methylation study of fetus genome through a genome-wide analysis. *BMC Med. Genomics* **7**, 18 (2014).
- Tegha-Dunghu, J. *et al.* EML3 is a nuclear microtubule-binding protein required for the correct alignment of chromosomes in metaphase. *J. Cell. Sci.* **121**, 1718–1726 (2008).
- Wee, K., Yang, W., Sugii, S. & Han, W. Towards a mechanistic understanding of lipodystrophy and seipin functions. *Biosci. Rep.* **34** (2014).
- Westra, H. J. *et al.* Systematic identification of trans eQTLs as putative drivers of known disease associations. *Nat. Genet.* **45**, 1238–1243 (2013).
- Ramdas, M., Harel, C., Armoni, M. & Karnieli, E. AHNK KO Mice are protected from diet-induced obesity but are glucose intolerant. *Horm. Metab. Res.* **47**, 265–272 (2015).
- Grundberg, E. *et al.* Mapping cis- and trans-regulatory effects across multiple tissues in twins. *Nat. Genet.* **44**, 1084–1089 (2012).
- Chambers, J. C. *et al.* Genetic loci influencing kidney function and chronic kidney disease. *Nat. Genet.* **42**, 373–375 (2010).
- Dastani, Z. *et al.* Novel loci for adiponectin levels and their influence on type 2 diabetes and metabolic traits: a multi-ethnic meta-analysis of 45,891 individuals. *PLoS Genet.* **8**, e1002607 (2012).
- Replication, D. I. G. *et al.* Genome-wide trans-ancestry meta-analysis provides insight into the genetic architecture of type 2 diabetes susceptibility. *Nat. Genet.* **46**, 234–244 (2014).
- Scott, R. A. *et al.* Large-scale association analyses identify new loci influencing glycemic traits and provide insight into the underlying biological pathways. *Nat. Genet.* **44**, 991–1005 (2012).
- Richards, J. B. *et al.* A genome-wide association study reveals variants in ARL15 that influence adiponectin levels. *PLoS Genet.* **5**, e1000768 (2009).
- Teslovich, T. M. *et al.* Biological, clinical and population relevance of 95 loci for blood lipids. *Nature* **466**, 707–713 (2010).
- Global Lipids Genetics, C. *et al.* Discovery and refinement of loci associated with lipid levels. *Nat. Genet.* **45**, 1274–1283 (2013).
- Glessner, J. T. *et al.* A genome-wide study reveals copy number variants exclusive to childhood obesity cases. *Am. J. Hum. Genet.* **87**, 661–666 (2010).
- Coronary Artery Disease Genetics Consortium. A genome-wide association study in Europeans and South Asians identifies five new loci for coronary artery disease. *Nat. Genet.* **43**, 339–344 (2011).
- Aulchenko, Y. S., Ripke, S., Isaacs, A. & van Duijn, C. M. GenABEL: an R library for genome-wide association analysis. *Bioinformatics* **23**, 1294–1296 (2007).
- Willer, C. J., Li, Y. & Abecasis, G. R. METAL: fast and efficient meta-analysis of genomewide association scans. *Bioinformatics* **26**, 2190–2191 (2010).
- Purcell, S. *et al.* PLINK: a tool set for whole-genome association and population-based linkage analyses. *Am. J. Hum. Genet.* **81**, 559–575 (2007).
- Yang, J., Lee, S. H., Goddard, M. E. & Visscher, P. M. GCTA: a tool for genome-wide complex trait analysis. *Am. J. Hum. Genet.* **88**, 76–82 (2011).

Acknowledgements

A complete list of acknowledgements is described in Supplementary Notes.

Author contributions

A detailed list of author contributions is described in Supplementary Notes.

Additional information

Supplementary Information accompanies this paper at <http://www.nature.com/naturecommunications>

Competing financial interests: Kari Stefansson, Valgerdur Steinthorsdottir, Gudmar Thorleifsson and Unnur Thorsteinsdottir are used by deCODE Genetics/Amgen inc. Gérard Waeber and Peter Vollenweider received an unrestricted grant from GSK to build the CoLaus study. Bruce M. Psaty serves on a DSMB for a clinical trial of a device funded by the manufacturer (Zoll LifeCor).

Reprints and permission information is available online at <http://npg.nature.com/reprintsandpermissions/>



This work is licensed under a Creative Commons Attribution 4.0 International License. The images or other third party material in this article are included in the article's Creative Commons license, unless indicated otherwise in the credit line; if the material is not included under the Creative Commons license, users will need to obtain permission from the license holder to reproduce the material. To view a copy of this license, visit <http://creativecommons.org/licenses/by/4.0/>

How to cite this article: Ried, J. S. *et al.* A principal component meta-analysis on multiple anthropometric traits identifies novel loci for body shape. *Nat. Commun.* 7, 13357 doi: 10.1038/ncomms13357 (2016).

Publisher's note: Springer Nature remains neutral with regard to jurisdictional claims in published maps and institutional affiliations.

© The Author(s) 2016

Janina S. Ried^{1,*}, Janina M. Jeff^{2,*}, Audrey Y. Chu³, Jennifer L. Bragg-Gresham⁴, Jenny van Dongen⁵, Jennifer E. Huffman⁶, Tarunveer S. Ahluwalia^{7,8,9}, Gemma Cadby¹⁰, Niina Eklund¹¹, Joel Eriksson¹², Tõnu Esko^{13,14,15,16}, Mary F. Feitosa¹⁷, Anuj Goel^{18,19}, Mathias Gorski^{20,21}, Caroline Hayward⁶, Nancy L. Heard-Costa^{22,23}, Anne U. Jackson²⁴, Eero Jokinen²⁵, Stavroula Kanoni^{26,27}, Kati Kristiansson^{11,28}, Zoltán Kutalik^{29,30,31}, Jari Lahti^{32,33}, Jian'an Luan³⁴, Reedik Mägi^{15,19}, Anubha Mahajan¹⁹, Massimo Mangino³⁵, Carolina Medina-Gomez^{36,37}, Keri L. Monda^{38,39}, Ilja M. Nolte⁴⁰, Louis Pérusse^{41,42}, Inga Prokopenko^{19,43,44}, Lu Qi^{45,46}, Lynda M. Rose³, Erika Salvi^{47,48}, Megan T. Smith⁴⁹, Harold Snieder⁴⁰, Alena Stančáková⁵⁰, Yun Ju Sung⁵¹, Ioanna Tachmazidou²⁶, Alexander Teumer^{52,53}, Gudmar Thorleifsson⁵⁴, Pim van der Harst^{55,56,57}, Ryan W. Walker^{2,58}, Sophie R. Wang^{16,59,60,61}, Sarah H. Wild⁶², Sara M. Willems⁶³, Andrew Wong⁶⁴, Weihua Zhang^{65,66}, Eva Albrecht¹, Alexessander Couto Alves⁶⁷, Stephan J.L. Bakker⁶⁸, Cristina Barlassina^{47,48}, Traci M. Bartz^{49,69,70}, John Beilby^{71,72}, Claire Bellis^{73,74}, Richard N. Bergman⁷⁵, Sven Bergmann^{29,30}, John Blangero⁷⁶, Matthias Blüher^{77,78}, Eric Boerwinkle⁷⁹, Lori L. Bonnycastle⁸⁰, Stefan R. Bornstein⁸¹, Marcel Bruinenberg⁸², Harry Campbell⁶², Yii-Der Ida Chen⁸³, Charleston W.K. Chiang⁸⁴, Peter S. Chines⁸⁰, Francis S. Collins⁸⁰, Francesco Cucca⁸⁵, L. Adrienne Cupples²², Francesca D'Avila^{47,48}, Eco J.C. de Geus^{5,86}, George Dedoussis⁸⁷, Maria Dimitriou^{26,87}, Angela Döring^{88,89}, Johan G. Eriksson^{32,90,91}, Alike Eleni Farmaki⁸⁷, Martin Farrall^{18,19}, Teresa Ferreira¹⁹, Krista Fischer¹⁵, Nita G. Forouhi³⁴, Nele Friedrich⁹², Anette Prior Gjesing⁷, Nicola Glorioso⁹³, Mariaelisa Graff³⁸, Harald Grallert^{89,94,95}, Niels Grarup⁷, Jürgen Gräßler⁹⁶, Jagvir Grewal^{65,66}, Anders Hamsten^{97,98,99}, Marie Neergaard Harder⁷, Catharina A. Hartman¹⁰⁰, Maija Hassinen¹⁰¹, Nicholas Hastie⁶, Andrew Tym Hattersley¹⁰², Aki S. Havulinna¹¹, Markku Heliövaara¹¹, Hans Hillege⁵⁷, Albert Hofman³⁶, Oddgeir Holmen¹⁰³, Georg Homuth⁵³, Jouke-Jan Hottenga⁵, Jennie Hui^{71,72,104}, Lise Lotte Husemoen¹⁰⁵, Pirro G. Hysi³⁵, Aaron Isaacs⁶³, Till Ittermann⁵², Shapour Jalilzadeh^{18,19}, Alan L. James¹⁰⁶, Torben Jørgensen^{107,108,109}, Pekka Jousilahti¹¹, Antti Jula¹¹, Johanne Marie Justesen⁷, Anne E. Justice³⁸, Mika Kähönen^{110,111}, Maria Karaleftheri¹¹², Kay Tee Khaw¹¹³, Sirkka M. Keinänen-Kiukaanniemi^{114,115}, Leena Kinnunen¹¹⁶, Paul B. Knekt¹¹, Heikki A. Koistinen^{116,117,118}, Ivana Kolcic¹¹⁹, Ishminder K. Kooner⁶⁶, Seppo Koskinen¹¹, Peter Kovacs⁷⁷, Theodosios Kyriakou^{18,19}, Tomi Laitinen^{120,121}, Claudia Langenberg^{34,122}, Alexandra M. Lewin⁶⁷, Peter Lichtner¹²³, Cecilia M. Lindgren^{13,19,124}, Jaana Lindström¹¹, Allan Linneberg^{105,107,125}, Roberto Lorbeer⁵², Mattias Lorentzon¹², Robert Luben¹²⁶, Valeriya Lyssenko^{8,127}, Satu Männistö¹¹, Paolo Manunta¹²⁸, Irene Mateo Leach⁵⁷, Wendy L. McArdle¹²⁹, Barbara Mcknight^{49,70,130}, Karen L. Mohlke¹³¹, Evelin Mihailov¹⁵, Lili Milani¹⁵, Rebecca Mills⁶⁶, May E. Montasser¹³², Andrew P. Morris^{19,133}, Gabriele Müller¹³⁴, Arthur W. Musk¹³⁵, Narisu Narisu⁸⁰, Ken K. Ong^{34,64,136}, Ben A. Oostra⁶³, Clive Osmond¹³⁷, Aarno Palotie^{28,138}, James S. Pankow¹³⁹, Lavinia Paternoster¹⁴⁰, Brenda W. Penninx¹⁴¹, Irene Pichler^{142,143}, Maria G. Pilia¹⁴⁴, Ozren Polašek^{62,119}, Peter P. Pramstaller^{142,143,145,146}, Olli T. Raitakari^{147,148}, Tuomo Rankinen¹⁴⁹, D.C. Rao^{51,150}, Nigel W. Rayner^{19,44,151}, Rasmus Ribel-Madsen⁷, Treva K. Rice^{51,150}, Marcus Richards^{44,64}, Paul M. Ridker^{3,152}, Fernando Rivadeneira^{36,37}, Kathy A. Ryan¹³², Serena Sanna¹⁴⁴, Mark A. Sarzynski¹⁴⁹, Salome Scholtens⁴⁰, Robert A. Scott³⁴, Sylvain Sebert^{43,153,154}, Lorraine Southam^{19,26}, Thomas Hempel Sparsø⁷, Valgerdur Steinthorsdottir⁵⁴, Kathleen Stirrups^{26,27}, Ronald P. Stolk⁴⁰, Konstantin Strauch^{1,155}, Heather M.

Stringham²⁴, Morris A. Swertz⁵⁶, Amy J. Swift⁸⁰, Anke Tönjes⁷⁸, Emmanouil Tsafantakis¹⁵⁶, Peter J. van der Most⁴⁰, Jana V. Van Vliet-Ostaptchouk¹⁵⁷, Liesbeth Vandenput¹², Erkki Vartiainen¹¹, Cristina Venturini^{35,158}, Niek Verweij⁵⁷, Jorma S. Viikari^{159,160}, Veronique Vitart⁶, Marie-Claude Vohl^{42,161}, Judith M. Vonk⁴⁰, Gérard Waeber¹⁶², Elisabeth Widén²⁸, Gonneke Willemsen⁵, Tom Wilsgaard¹⁶³, Thomas W. Winkler²¹, Alan F. Wright⁶, Laura M. Yerges-Armstrong¹³², Jing Hua Zhao³⁴, M. Carola Zillikens³⁷, Dorret I. Boomsma⁵, Claude Bouchard¹⁴⁹, John C. Chambers^{65,66,164}, Daniel I. Chasman^{3,152}, Daniele Cusi^{47,48}, Ron T. Gansevoort⁶⁸, Christian Gieger^{1,89,95}, Torben Hansen^{7,165}, Andrew A. Hicks^{142,143}, Frank Hu^{45,46}, Kristian Hveem¹⁰³, Marjo-Riitta Jarvelin^{153,166,167,168}, Eero Kajantie^{11,90,169,170}, Jaspal S. Kooner^{66,164,171}, Diana Kuh⁶⁴, Johanna Kuusisto⁵⁰, Markku Laakso⁵⁰, Timo A. Lakka^{101,172}, Terho Lehtimäki^{173,174}, Andres Metspalu¹⁵, Inger Njølstad^{163,175}, Claes Ohlsson¹², Albertine J. Oldehinkel¹⁰⁰, Lyle J. Palmer^{176,177}, Oluf Pedersen⁷, Markus Perola^{11,15,28}, Annette Peters^{89,95,178}, Bruce M. Psaty^{70,179,180,181}, Hannu Puolijoki¹⁸², Rainer Rauramaa^{101,183}, Igor Rudan⁶², Veikko Salomaa¹¹, Peter E.H. Schwarz^{81,184}, Alan R. Shudiner^{132,185}, Jan H. Smit¹⁴¹, Thorkild I.A. Sørensen^{7,186,187}, Timothy D. Spector³⁵, Kari Stefansson^{54,188}, Michael Stumvoll^{77,78}, Angelo Tremblay⁴¹, Jaakko Tuomilehto^{189,190,191}, André G. Uitterlinden^{36,37}, Matti Uusitupa^{192,193}, Uwe Völker^{53,194}, Peter Vollenweider¹⁶², Nicholas J. Wareham³⁴, Hugh Watkins^{18,19}, James F. Wilson^{6,62}, Eleftheria Zeggini²⁶, Goncalo R. Abecasis²⁴, Michael Boehnke²⁴, Ingrid B. Borecki¹⁷, Panos Deloukas^{27,151,195}, Cornelia M. van Duijn^{63,196}, Caroline Fox^{22,152}, Leif C. Groop^{127,197}, Iris M. Heid^{21,198}, David J. Hunter^{13,45,46,199}, Robert C. Kaplan²⁰⁰, Mark I. McCarthy^{19,44,201}, Kari E. North²⁰², Jeffrey R. O'Connell¹³², David Schlessinger²⁰³, Unnur Thorsteinsdottir^{54,188}, David P. Strachan²⁰⁴, Timothy Frayling²⁰⁵, Joel N. Hirschhorn^{13,14,16,59,60,61,206}, Martina Müller-Nurasyid^{1,155,178,207,**} & Ruth J.F. Loos^{2,34,58,208,209,**}

¹Institute of Genetic Epidemiology, Helmholtz Zentrum München-German Research Center for Environmental Health, 85764 Neuherberg, Germany. ²The Charles Bronfman Institute for Personalized Medicine, The Icahn School of Medicine at Mount Sinai, New York, New York 10029, USA. ³Division of Preventive Medicine, Brigham and Women's Hospital, Boston, Massachusetts 02215, USA. ⁴Kidney Epidemiology and Cost Center, Internal Medicine-Nephrology, University of Michigan, Ann Arbor, Michigan 48109, USA. ⁵Department of Biological Psychology, VU University, 1081BT Amsterdam, The Netherlands. ⁶MRC Human Genetics Unit, Institute of Genetics and Molecular Medicine, University of Edinburgh, EH4 2XU Edinburgh, Scotland. ⁷Faculty of Health and Medical Sciences, Novo Nordisk Foundation Center for Basic Metabolic Research, Section of Metabolic Genetics, University of Copenhagen, 2100 Copenhagen, Denmark. ⁸Steno Diabetes Center A/S, DK-2820 Gentofte, Denmark. ⁹COPSAC, Copenhagen Prospective Studies on Asthma in Childhood, Herlev and Gentofte Hospital, University of Copenhagen, Ledreborg Allé 34, DK-2820 Copenhagen, Denmark. ¹⁰Centre for Genetic Origins of Health and Disease, University of Western Australia, Crawley, Western Australia 6009, Australia. ¹¹Department of Health, National Institute for Health and Welfare (THL), FI-00271 Helsinki, Finland. ¹²Department of Internal Medicine and Clinical Nutrition, Centre for Bone and Arthritis Research, Institute of Medicine, Sahlgrenska Academy, University of Gothenburg, 413 45 Gothenburg, Sweden. ¹³Broad Institute of the Massachusetts Institute of Technology and Harvard University, Cambridge, Massachusetts 02142, USA. ¹⁴Divisions of Endocrinology and Genetics and Center for Basic and Translational Obesity Research, Boston Children's Hospital, Boston, Massachusetts 02115, USA. ¹⁵Estonian Genome Center, University of Tartu, Tartu 51010, Estonia. ¹⁶Department of Genetics, Harvard Medical School, Boston, Massachusetts 02115, USA. ¹⁷Division of Statistical Genomics, Department of Genetics, Washington University School of Medicine, St. Louis, Missouri 63108, USA. ¹⁸Division of Cardiovascular Medicine, Radcliffe Department of Medicine, University of Oxford, Oxford OX3 9DU, UK. ¹⁹Wellcome Trust Centre for Human Genetics, University of Oxford, Oxford OX3 7BN, UK. ²⁰Department of Nephrology, University Hospital Regensburg, 93042 Regensburg, Germany. ²¹Department of Genetic Epidemiology, Institute of Epidemiology and Preventive Medicine, University of Regensburg, 93053 Regensburg, Germany. ²²National Heart, Lung, and Blood Institute, the Framingham Heart Study, Framingham, Massachusetts 01702, USA. ²³Department of Neurology, Boston University School of Medicine, Boston, Massachusetts 02118, USA. ²⁴Department of Biostatistics, Center for Statistical Genetics, University of Michigan, Ann Arbor, Michigan 48109, USA. ²⁵Hospital for Children and Adolescents, University of Helsinki, FI-00290 Helsinki, Finland. ²⁶Wellcome Trust Sanger Institute, Human Genetics, Hinxton, Cambridge CB10 1SA, UK. ²⁷William Harvey Research Institute, Barts and The London School of Medicine and Dentistry, Queen Mary University of London, London EC1M 6BQ, UK. ²⁸Institute for Molecular Medicine Finland, University of Helsinki, FI-00290 Helsinki, Finland. ²⁹Swiss Institute of Bioinformatics, 1015 Lausanne, Switzerland. ³⁰Department of Medical Genetics, University of Lausanne, Lausanne, 1005, Switzerland. ³¹Institute of Social and Preventive Medicine, University Hospital Lausanne (CHUV), 1010 Lausanne, Switzerland. ³²Folkhälsan Research Centre, FI-00290 Helsinki, Finland. ³³Institute of Behavioural Sciences, University of Helsinki, FI-00014 Helsinki, Finland. ³⁴MRC Epidemiology Unit, University of Cambridge School of Clinical Medicine, Institute of Metabolic Science, University of Cambridge, Cambridge Biomedical Campus, Cambridge CB2 0QQ, UK. ³⁵Department of Twin Research and Genetic Epidemiology, King's College London, London SE1 7EH, UK. ³⁶Department of Epidemiology, Erasmus Medical Center, 3015GE Rotterdam, The Netherlands. ³⁷Department of Internal Medicine, Erasmus Medical Center, 3015GE Rotterdam, The Netherlands. ³⁸Department of Epidemiology, University of North Carolina at Chapel Hill, Chapel Hill, North Carolina 27599, USA. ³⁹The Center for Observational Research, Amgen Inc., Thousand Oaks, California 91320-1799, USA. ⁴⁰Department of Epidemiology, University of Groningen, University Medical Center Groningen, 9700 RB Groningen, The Netherlands. ⁴¹Department of Kinesiology, Laval University, Québec, Québec, Canada G1V 0A6. ⁴²Institute of Nutrition and Functional Foods, Laval University, Québec, Québec, Canada G1V 0A6. ⁴³Department of Genomics of Common Disease, School of Public Health, Imperial College London, London W12 0NN, UK. ⁴⁴Oxford Centre for Diabetes, Endocrinology and Metabolism, University of Oxford, Churchill Hospital, Oxford OX3 7LJ, UK. ⁴⁵Department of Medicine, Channing Division of Network Medicine, Brigham and Women's Hospital and Harvard Medical School, Boston, Massachusetts 02115, USA. ⁴⁶Department of Nutrition, Harvard School of Public Health, Boston, Massachusetts 02115, USA. ⁴⁷Department of Health Sciences, University of Milano at San Paolo Hospital, 20139 Milano, Italy. ⁴⁸Filarete Foundation,

Genomic and Bioinformatics Unit, Milano 20139, Italy. ⁴⁹ Department of Biostatistics, University of Washington, Seattle, Washington 98195, USA. ⁵⁰ Department of Medicine, University of Eastern Finland and Kuopio University Hospital, 70210 Kuopio, Finland. ⁵¹ Division of Biostatistics, Washington University School of Medicine, St. Louis, Missouri 63110, USA. ⁵² Institute for Community Medicine, University Medicine Greifswald, 17475 Greifswald, Germany. ⁵³ Interfaculty Institute for Genetics and Functional Genomics, University Medicine Greifswald, 17475 Greifswald, Germany. ⁵⁴ deCODE Genetics, Amgen inc., 101 Reykjavik, Iceland. ⁵⁵ Durrer Center for Cardiogenetic Research, Interuniversity Cardiology Institute Netherlands-Netherlands Heart Institute, 3501 DG Utrecht, The Netherlands. ⁵⁶ Department of Genetics, University of Groningen, University Medical Center Groningen, 9700 RB Groningen, The Netherlands. ⁵⁷ Department of Cardiology, University of Groningen, University Medical Center Groningen, 9700 RB Groningen, Netherlands. ⁵⁸ The Department of Preventive Medicine, The Icahn School of Medicine at Mount Sinai, New York, New York 10029, USA. ⁵⁹ Program in Medical and Population Genetics, Broad Institute of Harvard and Massachusetts Institute of Technology, Cambridge, Massachusetts 02142, USA. ⁶⁰ Division of Endocrinology, Boston Children's Hospital, Boston, Massachusetts 02115, USA. ⁶¹ Divisions of Genetics and Endocrinology and Program in Genomics, Boston's Children's Hospital, Boston, Massachusetts 02115, USA. ⁶² Centre for Global Health Research, Usher Institute of Population Health Sciences and Informatics, University of Edinburgh, EH8 9AG Teviot Place, Edinburgh, Scotland. ⁶³ Department of Epidemiology, Genetic Epidemiology Unit, Erasmus University Medical Center, 3015GE Rotterdam, The Netherlands. ⁶⁴ MRC Unit for Lifelong Health & Ageing at UCL, London WC1B 5JU, UK. ⁶⁵ Department of Epidemiology and Biostatistics, Imperial College London, London W2 1PG, UK. ⁶⁶ Ealing Hospital NHS Trust, Middlesex UB1 3HW, UK. ⁶⁷ Department of Epidemiology and Biostatistics, MRC Health Protection Agency (HPA) Centre for Environment and Health, School of Public Health, Imperial College, London W12 0NN, UK. ⁶⁸ Department of Medicine, University of Groningen, University Medical Center Groningen, 9700 RB Groningen, Netherlands. ⁶⁹ Department of Medicine, University of Washington, Seattle, Washington 98101, USA. ⁷⁰ Cardiovascular Health Research Unit, University of Washington, Seattle, Washington 98101, USA. ⁷¹ Pathwest Laboratory Medicine of Western Australia, Nedlands, Western Australia 6009, Australia. ⁷² School of Pathology and Laboratory Medicine, University of Western Australia, Nedlands, Western Australia 6009, Australia. ⁷³ Genomics Research Centre, Institute of Health and Biomedical Innovation, Queensland University of Technology, Brisbane, Queensland 4001, Australia. ⁷⁴ Human Genetics, Genome Institute of Singapore, Agency for Science, Technology and Research of Singapore, Singapore 138672, Singapore. ⁷⁵ Diabetes and Obesity Research Institute, Cedars-Sinai Medical Center, Los Angeles, California 90048, USA. ⁷⁶ South Texas Diabetes and Obesity Institute, University of Texas Rio Grande Valley, Brownsville, Texas 78520, USA. ⁷⁷ University of Leipzig, IFB Adiposity Diseases, 04103 Leipzig, Germany. ⁷⁸ Department of Medicine, University of Leipzig, 04103 Leipzig, Germany. ⁷⁹ Human Genetics Center and Institute of Molecular Medicine, University of Texas Health Science Center, Houston, Texas 77030, USA. ⁸⁰ Medical Genomics and Metabolic Genetics Branch, National Human Genome Research Institute, NIH, Bethesda, Maryland 20892, USA. ⁸¹ Medical Faculty Carl Gustav Carus, Department of Medicine III, University of Dresden, 01307 Dresden, Germany. ⁸² University of Groningen, University Medical Center Groningen, The LifeLines Cohort Study, 9700 RB Groningen, The Netherlands. ⁸³ Los Angeles BioMedical Research Institute at Harbor-UCLA Medical Center, Torrance, California 90502, USA. ⁸⁴ Department of Psychiatry, University of California, Los Angeles, California 90095, USA. ⁸⁵ University of Sassari, 07100 Sassari, Italy. ⁸⁶ EMGO Institute for Health and Care Research, VU University Medical Center, 1081 BT Amsterdam, The Netherlands. ⁸⁷ Department of Nutrition and Dietetics, School of Health Science and Education, Harokopio University, 17671 Athens, Greece. ⁸⁸ Institute of Epidemiology I, Helmholtz Zentrum München-German Research Center for Environmental Health, 85764 Neuherberg, Germany. ⁸⁹ Institute of Epidemiology II, Helmholtz Zentrum München-German Research Center for Environmental Health, 85764 Neuherberg, Germany. ⁹⁰ Department of Chronic Disease Prevention, National Institute for Health and Welfare, FI-00271 Helsinki, Finland. ⁹¹ Department of General Practice and Primary Health Care, University of Helsinki, FI-00014 Helsinki, Finland. ⁹² Institute of Clinical Chemistry and Laboratory Medicine, University Medicine Greifswald, 17475 Greifswald, Germany. ⁹³ Hypertension and Related Disease Centre, AOU-University of Sassari, 7100 Sassari, Italy. ⁹⁴ German Center for Diabetes Research (DZD), 85764 Neuherberg, Germany. ⁹⁵ Research Unit of Molecular Epidemiology, Helmholtz Zentrum München-German Research Center for Environmental Health, 85764 Neuherberg, Germany. ⁹⁶ Department of Medicine III, Pathobiochemistry, Technische Universität, 01307 Dresden, Germany. ⁹⁷ Department of Medicine, Karolinska Institutet, Stockholm, Sweden. ⁹⁸ Department of Medicine Solna, Atherosclerosis Research Unit, Karolinska Institutet, 17176 Stockholm 17176, Sweden. ⁹⁹ Center for Molecular Medicine, Karolinska University Hospital, 17176 Stockholm, Sweden. ¹⁰⁰ University of Groningen, University Medical Center Groningen, Interdisciplinary Center Psychopathology and Emotion Regulation, 9700 RB Groningen, The Netherlands. ¹⁰¹ Kuopio Research Institute of Exercise Medicine, 70100 Kuopio, Finland. ¹⁰² Institute of Biomedical & Clinical Science, University of Exeter, Barrack Road, Exeter EX2 5DW, UK. ¹⁰³ Department of Public Health and General Practice, Norwegian University of Science and Technology, 7489 Trondheim, Norway. ¹⁰⁴ School of Population Health, University of Western Australia, Nedlands, Western Australia 6009, Australia. ¹⁰⁵ Research Centre for Prevention and Health, Glostrup Hospital, 2600 Glostrup, Denmark. ¹⁰⁶ Department of Pulmonary Physiology and Sleep Medicine, Sir Charles Gairdner Hospital, Nedlands, Western Australia 6009, Australia. ¹⁰⁷ Department of Clinical Medicine, Faculty of Health and Medical Sciences, University of Copenhagen, 2200 Copenhagen, Denmark. ¹⁰⁸ Faculty of Medicine, University of Aalborg, 9220 Aalborg, Denmark. ¹⁰⁹ Research Centre for Prevention and Health, Capital Region of Denmark, DK2600 Glostrup, Denmark. ¹¹⁰ Department of Clinical Physiology, Tampere University Hospital, FI-33521 Tampere, Finland. ¹¹¹ Department of Clinical Physiology, University of Tampere School of Medicine, FI-33014 Tampere, Finland. ¹¹² Echinus Medical Centre, 67300 Echinus, Greece. ¹¹³ Clinical Gerontology Unit, Box 251, Addenbrooke's Hospital, Hills Road, Cambridge CB2 2QQ, UK. ¹¹⁴ Faculty of Medicine, Institute of Health Sciences, University of Oulu, Oulu FI-90014, Finland. ¹¹⁵ Unit of General Practice, Oulu University Hospital, Oulu FI-90029, Finland. ¹¹⁶ National Institute for Health and Welfare, FI-00271 Helsinki, Finland. ¹¹⁷ Department of Medicine and Abdominal Center: Endocrinology, University of Helsinki and Helsinki University Central Hospital, 00029 Helsinki, Finland. ¹¹⁸ Minerva Foundation Institute for Medical Research, 00290 Helsinki, Finland. ¹¹⁹ Department of Public Health, Faculty of Medicine, University of Split, 21000 Split, Croatia. ¹²⁰ Kuopio University Hospital, 70029 Kuopio, Finland. ¹²¹ Department of Clinical Physiology and Nuclear Medicine, University of Eastern Finland, FI-70211 Kuopio, Finland. ¹²² Department of Epidemiology and Public Health, UCL, London WC1E 6BT, UK. ¹²³ Institute of Human Genetics, Helmholtz Zentrum München-German Research Center for Environmental Health, 85764 Neuherberg, Germany. ¹²⁴ The Big Data Institute, University of Oxford, Oxford OX3 7LJ, UK. ¹²⁵ Department of Clinical Experimental Research, Rigshospitalet, 2600 Glostrup, Denmark. ¹²⁶ Strangeways Research Laboratory Wort's Causeway, Cambridge CB1 8RN, UK. ¹²⁷ Lund University Diabetes Centre and Department of Clinical Science, Diabetes & Endocrinology Unit, Lund University, 221 00 Malmö, Sweden. ¹²⁸ Chair of Nephrology, Università Vita Salute San Raffaele and Genomics of Renal Diseases and Hypertension Unit, IRCCS San Raffaele Scientific Institute, Milan 20139, Italy. ¹²⁹ School of Social and Community Medicine, University of Bristol, Bristol BS82BN, UK. ¹³⁰ Division of Public Health Sciences, Program in Biostatistics and Biomathematics, Fred Hutchinson Cancer Research Center, Seattle, Washington 98109, USA. ¹³¹ Department of Genetics, University of North Carolina, Chapel Hill, North Carolina 27599, USA. ¹³² Division of Endocrinology, Diabetes & Nutrition, Department of Medicine, Program for Personalized and Genomic Medicine, University of Maryland School of Medicine, Baltimore, Maryland 21201, USA. ¹³³ Department of Biostatistics, University of Liverpool, Liverpool L69 3GA, UK. ¹³⁴ Center for Evidence Based Healthcare, University of Dresden, Medical Faculty Carl Gustav Carus, Dresden, 01307, Germany. ¹³⁵ Department of Respiratory Medicine, Sir Charles Gairdner Hospital, Nedlands, West Australia 6009, Australia. ¹³⁶ Department of Paediatrics, University of Cambridge, Cambridge CB2 0QQ, UK. ¹³⁷ MRC Lifecourse Epidemiology Unit, University of Southampton, Southampton General Hospital, Southampton SO16 6YD, UK. ¹³⁸ Massachusetts General Hospital, Center for Human Genetic Research, Psychiatric and Neurodevelopmental Genetics Unit, Boston, Massachusetts 02114, USA. ¹³⁹ Division of Epidemiology and Community Health, School of Public Health, University of Minnesota, Minneapolis, Minnesota 55455-0381, USA. ¹⁴⁰ MRC Integrative Epidemiology Unit, School of Social and Community Medicine, University of Bristol, Bristol BS8 1TH, UK. ¹⁴¹ Department of Psychiatry and EMGO Institute for Health and Care Research, VU University Medical Center, AJ Ernststraat 1887, 1081 HL Amsterdam, The Netherlands. ¹⁴² Center for

Biomedicine, European Academy Bozen/Bolzano (EURAC), 39100 Bolzano, Italy. ¹⁴³ Affiliated Institute of the University of Lübeck, 23562 Lübeck, Germany. ¹⁴⁴ Istituto di Ricerca Genetica e Biomedica, CNR, 9042 Monserrato, Italy. ¹⁴⁵ Department of Neurology, University of Lübeck, 23562 Lübeck, Germany. ¹⁴⁶ Department of Neurology, General Central Hospital, 39100 Bolzano, Italy. ¹⁴⁷ Department of Clinical Physiology and Nuclear Medicine, Turku University Hospital, FI-20521 Turku, Finland. ¹⁴⁸ Research Centre of Applied and Preventive Cardiovascular Medicine, University of Turku, FI-20520 Turku, Finland. ¹⁴⁹ Human Genomics Laboratory, Pennington Biomedical Research Center, Baton Rouge, Louisiana 70808, USA. ¹⁵⁰ Department of Psychiatry, Washington University School of Medicine, St. Louis, Missouri 63110, USA. ¹⁵¹ Wellcome Trust Sanger Institute, Human Genetics, Hinxton CB10 1HH, UK. ¹⁵² Harvard Medical School, Boston, Massachusetts, 02115, USA. ¹⁵³ Biocenter Oulu, University of Oulu, Oulu FI-90014, Finland. ¹⁵⁴ Center For Life-Course Health Research, University of Oulu, FI-90014 Oulu, Finland. ¹⁵⁵ Institute of Medical Informatics, Biometry and Epidemiology, Chair of Genetic Epidemiology, Ludwig-Maximilians-Universität, 81377 Munich, Germany. ¹⁵⁶ Anogia Medical Centre, 74051 Anogia, Greece. ¹⁵⁷ Department of Endocrinology, University of Groningen, University Medical Center Groningen, 9700 RB Groningen, The Netherlands. ¹⁵⁸ Institute of Ophthalmology, University College London, London EC1V 9EL, UK. ¹⁵⁹ Department of Medicine, University of Turku, FI-20521 Turku, Finland. ¹⁶⁰ Division of Medicine, Turku University Hospital, Turku, Finland. ¹⁶¹ School of Nutrition, Laval University, Québec, Québec, Canada G1V 0A6. ¹⁶² Department of Internal Medicine, University Hospital Lausanne (CHUV) and University of Lausanne, 1011 Lausanne, Switzerland. ¹⁶³ Department of Community Medicine, Faculty of Health Sciences, University of Tromsø, 9037 Tromsø, Norway. ¹⁶⁴ Imperial College Healthcare NHS Trust, London W12 OHS, UK. ¹⁶⁵ Faculty of Health Sciences, University of Southern Denmark, 5000 Odense, Denmark. ¹⁶⁶ Unit of Primary Care, Oulu University Hospital, 90029 OYS Oulu, Finland. ¹⁶⁷ Department of Epidemiology and Biostatistics, MRC-PHE Centre for Environment & Health, School of Public Health, Imperial College London W12 ONN, UK. ¹⁶⁸ Faculty of Medicine, Center for Life Course Epidemiology, University of Oulu, P.O.Box 5000, FI-90014 Oulu, Finland. ¹⁶⁹ Children's Hospital, Helsinki University Hospital and University of Helsinki, FI-00029 Helsinki, Finland. ¹⁷⁰ Department of Obstetrics and Gynecology, MRC Oulu, Oulu University Hospital and University of Oulu, FI-90029 Oulu, Finland. ¹⁷¹ National Heart and Lung Institute, Imperial College London, London W12 ONN, UK. ¹⁷² Department of Physiology, Institute of Biomedicine, University of Eastern Finland, Kuopio Campus, 70210 Kuopio, Finland. ¹⁷³ Department of Clinical Chemistry, University of Tampere School of Medicine, FI-33014 Tampere, Finland. ¹⁷⁴ Department of Clinical Chemistry, Fimlab Laboratories and School of Medicine, University of Tampere, FI-33520 Tampere, Finland. ¹⁷⁵ Department of Clinical Medicine, Faculty of Health Sciences, University of Tromsø, 9037 Tromsø, Norway. ¹⁷⁶ School of Public Health, University of Adelaide, Adelaide, South Australia 5005, Australia. ¹⁷⁷ Robinson Research Institute, University of Adelaide, Adelaide, South Australia 5005, Australia. ¹⁷⁸ DZHK (German Centre for Cardiovascular Research), partnersite Munich Heart Alliance, 80802 Munich, Germany. ¹⁷⁹ Department of Medicine, University of Washington, Seattle, Washington 98101, USA. ¹⁸⁰ Departments of Epidemiology and Health Services, University of Washington, Seattle, Washington 98101, USA. ¹⁸¹ Group Health Research Institute, Group Health Cooperative, Seattle, Washington 98101, USA. ¹⁸² South Ostrobothnia Central Hospital, Seinäjoki FI-60220, Finland. ¹⁸³ Department of Clinical Physiology and Nuclear Medicine, Kuopio University Hospital, 70211 Kuopio, Finland. ¹⁸⁴ Paul Langerhans Institute Dresden, German Center for Diabetes Research (DZD), Dresden 01307, Germany. ¹⁸⁵ Geriatric Research and Education Clinical Center, Veterans Administration Medical Center, Baltimore, Maryland 21042, USA. ¹⁸⁶ MRC Integrative Epidemiology Unit, School of Social and Community Medicine, University of Bristol, Bristol BS82BN, UK. ¹⁸⁷ Institute of Preventive Medicine, Bispebjerg and Frederiksberg Hospital, The Capital Region, 2000 Frederiksberg, Denmark. ¹⁸⁸ Faculty of Medicine, University of Iceland, 101 Reykjavik, Iceland. ¹⁸⁹ Diabetes Prevention Unit, National Institute for Health and Welfare, FI-00271 Helsinki, Finland. ¹⁹⁰ Centre for Vascular Prevention, Danube-University Krems, 3500 Krems, Austria. ¹⁹¹ Diabetes Research Group, King Abdulaziz University, Jeddah 21589, Saudi Arabia. ¹⁹² Department of Public Health and Clinical Nutrition, University of Eastern Finland, 70211 Kuopio, Finland. ¹⁹³ Research Unit, Kuopio University Hospital, 70029 Kuopio, Finland. ¹⁹⁴ DZHK (German Centre for Cardiovascular Research), Partner Site Greifswald, 17475 Greifswald, Germany. ¹⁹⁵ Princess Al-Jawhara Al-Brahim Centre of Excellence in Research of Hereditary Disorders (PACER-HD), King Abdulaziz University, Jeddah 21589, Saudi Arabia. ¹⁹⁶ Center for Medical Systems Biology, 2300 Leiden, The Netherlands. ¹⁹⁷ Finnish Institute for Molecular Medicine (FIMM), Helsinki University, 00014 Helsinki, Finland. ¹⁹⁸ Institute of Genetic Epidemiology, Helmholtz Zentrum München, Neuherberg 85764, Germany. ¹⁹⁹ Department of Epidemiology, Harvard School of Public Health, Boston, Massachusetts 02115, USA. ²⁰⁰ Department of Epidemiology and Population Health, Albert Einstein College of Medicine, Bronx, New York 10461, USA. ²⁰¹ Oxford NIHR Biomedical Research Centre, Oxford OX3 7LJ, UK. ²⁰² Department of Epidemiology, Carolina Center for Genome Sciences, University of North Carolina at Chapel Hill, Chapel Hill, North Carolina 27599-7400, USA. ²⁰³ National Institute on Aging, National Institutes of Health, Bethesda, Maryland 20892, USA. ²⁰⁴ Population Health Research Institute, St George's, University of London, London SW17 0RE, UK. ²⁰⁵ Genetics of Complex Traits, University of Exeter Medical School, University of Exeter, Exeter EX1 2LU, UK. ²⁰⁶ Metabolism Initiative, Broad Institute, Cambridge, Massachusetts 02142, USA. ²⁰⁷ Department of Medicine I, University Hospital Grosshadern, Ludwig-Maximilians-Universität, 81377 Munich, Germany. ²⁰⁸ The Genetics of Obesity and Related Metabolic Traits Program, The Icahn School of Medicine at Mount Sinai, New York, New York 10029, USA. ²⁰⁹ The Mindich Child Health and Development Institute, The Icahn School of Medicine at Mount Sinai, New York, New York 10029, USA. * These authors contributed equally to this work. ** These authors jointly supervised this work.