



Influenza Vaccination in Patients With Chronic Heart Failure

The PARADIGM-HF Trial

Orly Vardeny, PHARM.D, MS,^a Brian Claggett, PH.D,^b Jacob A. Udell, MD,^c Milton Packer, MD,^d Michael Zile, MD,^e Jean Rouleau, MD,^f Karl Swedberg, MD,^{g,h} Akshay S. Desai, MD, MPH,^b Martin Lefkowitz, MD,ⁱ Victor Shi, MD,ⁱ John J.V. McMurray, MD,^j Scott D. Solomon, MD,^b for the PARADIGM-HF Investigators

ABSTRACT

OBJECTIVES This study sought to examine the prevalence and predictors of influenza vaccination among participants in the PARADIGM-HF (Prospective Comparison of ARNI with ACEI to Determine Impact on Global Mortality and Morbidity in Heart Failure) study and investigate associations between receiving influenza vaccine and cardiovascular death or heart failure hospitalizations, all-cause hospitalizations, and cardiopulmonary or influenza-related hospitalizations.

BACKGROUND Influenza is associated with an increased risk for cardiovascular events in patients with heart failure.

METHODS We used data from the PARADIGM-HF trial in which patients with heart failure were randomized to the angiotensin receptor neprilysin inhibitor LCZ696 (sacubitril/valsartan) or enalapril. We assessed predictors of receiving influenza vaccination, and examined the relationship between influenza vaccination and outcomes in a propensity-adjusted model.

RESULTS Of 8,099 study participants, 1,769 (21%) received influenza vaccination. We observed significant regional variation in vaccination rates, with highest rates in the Netherlands (77.5%), Great Britain (77.2%), and Belgium (67.5%), and lowest rates in Asia (2.6%), with intermediate rates in North America (52.8%). Top predictors of vaccination included enrolling country, white race, implanted defibrillator, older age, lower New York Heart Association functional class, lower heart rate, and a history of diabetes mellitus. Influenza vaccination was associated with a reduced risk for all-cause mortality in propensity-adjusted (hazard ratio: 0.81; 95% confidence interval: 0.67 to 0.97; $p = 0.015$) models.

CONCLUSIONS Influenza vaccination rates varied widely in patients with heart failure with reduced ejection fraction enrolled in the PARADIGM-HF trial, and vaccination was associated with reduced risk for death, although whether this association was causal cannot be determined. (J Am Coll Cardiol HF 2016;4:152-8) © 2016 by the American College of Cardiology Foundation.

From the ^aPharmacy Practice Division, University of Wisconsin School of Pharmacy, Madison, Wisconsin; ^bCardiovascular Division, Brigham and Women's Hospital, Boston, Massachusetts; ^cDivision of Cardiology, Peter Munk Cardiac Centre, Toronto General Hospital and Women's College Hospital, Toronto, Ontario, Canada; ^dDepartment of Clinical Sciences, University of Texas Southwestern Medical Center, Dallas, Texas; ^eMedical University of South Carolina and Ralph H. Johnson Veterans Administration Medical Center, Charleston, South Carolina; ^fInstitut de Cardiologie, Université de Montréal, Montreal, Quebec, Canada; ^gDepartment of Molecular and Clinical Medicine, University of Gothenburg, Gothenburg, Sweden; ^hNational Heart and Lung Institute, Imperial College London, London, England; ⁱNovartis Pharmaceuticals Corporation, East Hanover, New Jersey; and the ^jBritish Heart Foundation Cardiovascular Research Center, University of Glasgow, Glasgow, Scotland, United Kingdom. Dr. Packer has served as a consultant for Novartis, Actelion, Sanofi, Cardiokinetics, BioControl, Janssen, Amgen, AMAG, Daiichi, CardioMEMS, AstraZeneca, Cardioentis, Boehringer Ingelheim, and Cardioentis. Drs. Zile, Rouleau, Swedberg, Desai, McMurray, and Solomon have served as a consultant for, or received research support from Novartis, sponsor of the PARADIGM-HF trial. Dr. Zile has served as a member of the executive committee for Novartis. Dr. Swedberg has consulted for and received research support from Novartis. Dr. Desai has served as a consultant for St. Jude Medical, Merck, and Relysa. Drs. Lefkowitz and Shi are employees of Novartis Pharmaceuticals Corporation. Dr. McMurray's employer, the University of Glasgow, was paid by Novartis for Dr. McMurray's time spent as cochairman of the PARADIGM-HF trial as well as coprincipal investigator for the PARADIGM-HF, PARAGON-HF, and ATMOSPHERE trials and meetings related to those trials as well as LCZ696 and aliskiren; for some of the aforementioned meetings, he has had his travel and accommodations paid for by Novartis. All other authors have reported that they have no relationships relevant to the contents of this paper to report.

Influenza infection can be devastating for patients with cardiovascular disease, and leads to significant morbidity and mortality each year (1-4). Influenza vaccination is recommended annually for patients with cardiovascular disease by both the Centers for Disease Control and Prevention, the American Heart Association, and the European Center for Disease Prevention and Control (5,6). A meta-analysis of randomized, controlled studies has shown that receiving influenza vaccination reduced the risk for major adverse cardiovascular events in patients with coronary artery disease compared to no vaccination (7).

Although widely recognized as beneficial, vaccination rates in patients with heart failure vary significantly in the United States and across the world (8). Heart failure patients are especially susceptible to influenza-related complications including acute heart failure exacerbations and secondary infections such as pneumonia, both of which increase hospitalizations (4,9).

SEE PAGE 159

The PARADIGM-HF (Prospective Comparison of ARNI with ACEI to Determine Impact on Global Mortality and Morbidity in Heart Failure) trial (10) enrolled patients with symptomatic heart failure with reduced ejection fraction and randomly allocated them to receive the angiotensin receptor neprilysin inhibitor LCZ696 (sacubitril/valsartan) or enalapril. At the time of enrollment, participants were queried about receipt of influenza vaccination in the past 12 months. We used data from PARADIGM-HF to assess prevalence of and baseline factors associated with influenza vaccination, as well as outcomes in those who did and did not receive influenza vaccination. We hypothesized that influenza vaccination would be associated with reduced risk for hospitalizations and mortality in patients with heart failure after propensity adjustment.

METHODS

STUDY DESIGN AND PATIENT SELECTION. The PARADIGM-HF trial was a double blind, randomized, active controlled trial designed to assess the impact of the angiotensin receptor neprilysin inhibitor LCZ696 (sacubitril/valsartan) compared with enalapril on cardiovascular mortality and heart failure hospitalizations in patients with left ventricular ejection fraction $\leq 40\%$ and New York Heart Association (NYHA) functional class II to IV heart failure. Eligible subjects had elevated natriuretic peptide levels and were treated with stable doses of angiotensin-converting enzyme inhibitors or angiotensin receptor

blockers and beta-adrenergic receptor blockers for at least 4 weeks prior to trial enrollment. Patients with symptomatic hypotension, estimated glomerular filtration rate (eGFR) < 30 ml/min/1.73m², potassium concentration > 5.2 mmol/l at screening, or history of angioedema were excluded. The study design and detailed inclusion and exclusion criteria have been previously reported (11).

Participants underwent 2 back-to-back single blind run-in phases with enalapril at a dose of at least 10 mg twice daily for 2 weeks, followed by LCZ696 (sacubitril/valsartan), first dosed at 100 mg twice daily, then 200 mg twice daily for 4 to 6 weeks. Participants were then randomized to receive enalapril 10 mg twice daily or LCZ696 (sacubitril/valsartan) 200 mg twice daily. Participants were followed for a median duration of 27 months. Participants were asked if they received the seasonal influenza vaccine during the previous 12 months, and this information was recorded in the case report form. Cardiopulmonary and influenza-related hospitalizations were captured through investigator reporting of cause of hospitalization on the case report form. The protocol was approved at each participating site by an ethics committee or institutional review board. All participants provided written informed consent in accordance with established guidelines for the protection of human subjects.

STATISTICAL ANALYSES. In order to identify potential differences, baseline characteristics were compared between participants who received influenza vaccination and those who did not. Between-group assessments were performed using *t* tests for continuous variables, and chi-square or Fisher's exact tests, as appropriate, for categorical variables. Logistic regression models were used to examine associations between baseline characteristics and receipt of influenza vaccination, adjusting for treatment assignment and the following covariates: age, sex, race, country, body mass index, ejection fraction, eGFR, NYHA functional class, history of diabetes mellitus, myocardial infarction, respiratory disease, and use of angiotensin-converting enzyme inhibitors or angiotensin receptor blockers, beta-adrenergic blockers, mineralocorticoid receptor antagonists, and diuretics at screening. A propensity score was created for receipt of influenza vaccination based on the logistic regression model. For the analysis of multivariable predictors of vaccination, country was included as a continuous covariate, represented by the observed overall vaccination rate of each participant's home country, rather than country on its own. As an exploratory analysis, we used each country's per-capita gross domestic product (GDP) as a continuous

ABBREVIATIONS AND ACRONYMS

eGFR = estimated glomerular filtration rate

GDP = gross domestic product

NYHA = New York Heart Association

TABLE 1 Baseline Characteristics by Influenza Vaccine Use

	No Influenza Vaccination (n = 6,630; 79%)	Influenza Vaccination (n = 1,769; 21%)	p Value
Age, yrs	62.7 ± 11.5	67.9 ± 10.1	<0.0001
Female, %	1,481 (22.3)	351 (19.8)	0.024
Caucasian	4,008 (60.5)	1,536 (86.8)	<0.0001
Body mass index, kg/m ²	27.93 ± 5.50	29.06 ± 5.51	<0.0001
Ischemic etiology	3,949 (59.6)	1,087 (61.4)	0.15
NYHA functional class			<0.0001
I	306 (4.6)	83 (4.7)	
II	4,569 (69.0)	1,350 (76.5)	
III	1,694 (25.6)	324 (18.4)	
IV	52 (0.8)	8 (0.5)	
Left ventricular ejection fraction	29.53 ± 6.17	29.32 ± 6.41	0.1968
History of heart failure hospitalization	4,267 (64.4)	1,007 (56.9)	<0.0001
History of hypertension	4,722 (71.2)	1,218 (68.9)	0.052
History of diabetes	2,184 (32.9)	723 (40.9)	<0.0001
History of myocardial infarction	2,761 (41.6)	873 (49.3)	<0.0001
Use of ICD	667 (10.1)	576 (32.6)	<0.0001
Use of CRT	305 (4.6)	269 (15.2)	<0.0001
Baseline medications			
ACE inhibitors	5,120 (77.2)	1,412 (79.8)	0.02
ARBs	1,519 (22.9)	373 (21.1)	0.10
Beta-blockers	6,139 (92.6)	1,672 (94.5)	0.005
MRAs	3,817 (57.6)	854 (48.3)	<0.0001
Diuretic	5,307 (80.0)	1,431 (80.9)	0.43
Digoxin	2,100 (31.7)	439 (24.8)	<0.0001
eGFR	69.5 ± 19.5	63.1 ± 17.9	<0.0001
NT-proBNP	1,638 (897-3,350)	1,569 (870-2,945)	0.08

Values are mean ± SD, n (%), or median (Interquartile range).

ACE = angiotensin-converting enzyme; ARBs = angiotensin receptor blockers; CRT = cardiac resynchronization therapy; eGFR = estimated glomerular filtration rate; ICD = implantable cardioverter-defibrillator; MRAs = mineralocorticoid receptor antagonists; NT-proBNP = N-terminal pro-B-type natriuretic peptide; NYHA = New York Heart Association.

variable in the multivariable model. Cox proportional hazards models were constructed to investigate associations of influenza vaccination with the risk for all-cause mortality, cardiovascular death or heart failure hospitalization, all-cause hospitalizations, and cardiopulmonary or influenza-related hospitalizations, in unadjusted as well as propensity-matched models. The propensity models were implemented by creating 100 equally sized groups of patients based on their estimated propensity for having received influenza vaccination, as described previously. These groups were subsequently used as a stratification factor in the Cox model, so that the reported hazard refers to the comparison of vaccinated and unvaccinated patients within the same propensity stratum. We performed a sensitivity analysis examining the association of influenza vaccine receipt and clinical outcomes, censoring events at 12 months because we did not have data on vaccination after randomization. A p value

of <0.05 was considered statistically significant. All analyses were completed using Stata, version 13 (StataCorp LP, College Station, Texas).

RESULTS

Of 8,399 participants in the PARADIGM-HF trial, 1,769 (21%) received influenza vaccination within a 12-month period while enrolled in the study. Baseline characteristics by influenza vaccination status are shown in **Table 1**. Influenza vaccine recipients were significantly older, had higher body mass index, lower NYHA functional class and eGFR, and were more likely to be male and Caucasian. More vaccine recipients had a history of diabetes, myocardial infarction, were taking beta-blockers, and had received cardiac resynchronization therapy, and less were taking mineralocorticoid receptor antagonists. There was significant variation in vaccination rates by country, with vaccination rates highest in the Netherlands (77.5%) the United Kingdom (77.2%), and Belgium (67.5%), and lowest in Asia (2.6%) (**Table 2**).

In a multivariable regression model, significant predictors of receiving influenza vaccine included, in descending order of association: country, older age, history of diabetes mellitus, lower NYHA functional class, lower heart rate, use of digoxin, use of an implantable cardioverter-defibrillator or cardiac resynchronization therapy, lower eGFR, higher ejection fraction, white race, and history of hospitalization for heart failure (**Table 3**). In an exploratory analysis, we observed a correlation between vaccination rates and country-specific GDP data (**Online Figure 1**).

Influenza vaccination was associated with a lower risk for all-cause mortality compared to no vaccination in unadjusted models (**Figure 1**) and after adjusting for the propensity to receive influenza vaccine (hazard ratio: 0.81; 95% confidence interval: 0.67 to 0.97; p = 0.015). In contrast, vaccination was associated with increased rates of cardiopulmonary, influenza-related, and all-cause hospitalization in unadjusted models, but not in propensity-adjusted models (**Table 4**). Sensitivity analyses censoring events at 12 months post-randomization revealed similar results (data not shown). The overall benefit of LCZ696 (sacubitril/valsartan) over enalapril on the trial's primary outcome was maintained regardless of influenza vaccination (p for interaction = 0.31).

DISCUSSION

In patients with heart failure and reduced ejection fraction enrolled in the PARADIGM-HF study, we found substantial worldwide regional variation in

TABLE 2 Vaccination Rate by Country

Country	Percentage
Argentina	30.2
Belgium	67.6
Bulgaria	1.4
Brazil	29.7
Canada	47.0
Chile	44.1
China	0.6
Columbia	7.3
Czechoslovakia	10.0
Germany	37.1
Denmark	54.7
Dominican Republic	0
Ecuador	7.8
Spain	52.8
Estonia	3.4
Finland	60.0
France	39.1
Great Britain	77.2
Guatemala	2.9
Hong Kong	8.7
Hungary	22.7
India	0.2
Iceland	55.6
Israel	36.6
Italy	41.0
Korea	20.7
Lithuania	0
Latvia	0
Mexico	17.5
Malaysia	0
Netherlands	77.5
Panama	13.3
Peru	0
Philippines	4.0
Poland	4.6
Portugal	53.1
Romania	4.4
Russia	0.2
Singapore	9.3
Slovakia	14.3
Sweden	55.2
Thailand	0
Turkey	1.6
Taiwan	5.8
United States	55.1
Venezuela	0
South Africa	6.2

TABLE 3 Predictors of Receipt of Influenza Vaccine

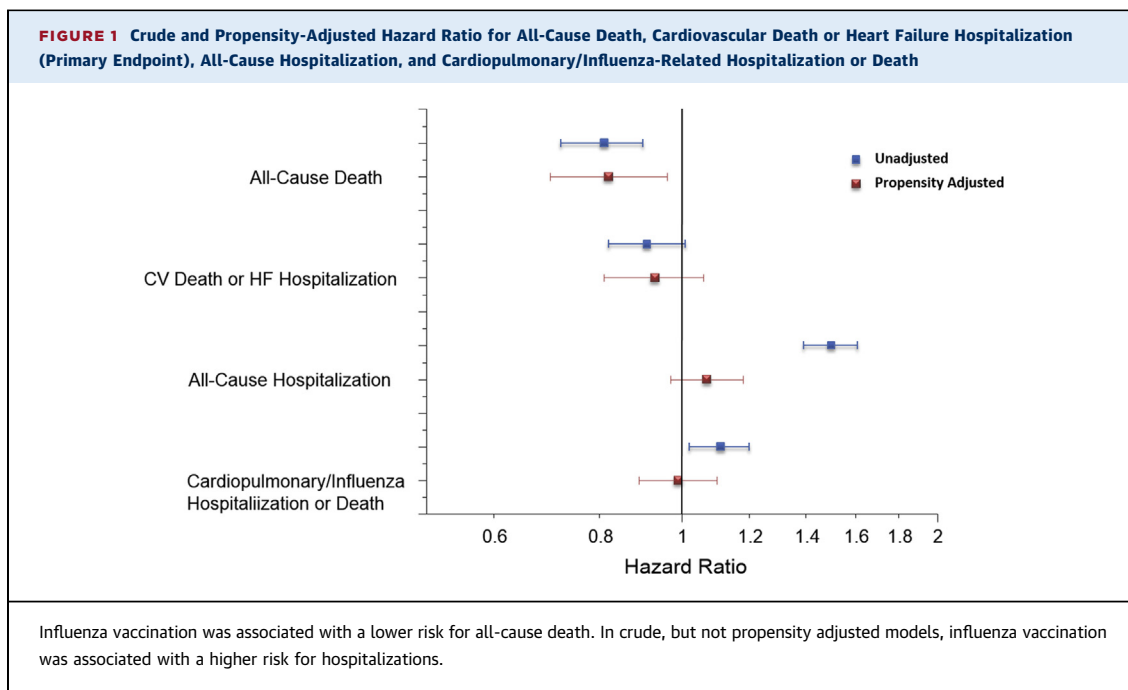
Predictor*	z-Score	Odds Ratio (95% CI)
Country	31.8	1.79 (1.72-1.85)
Age	7.32	1.02 (1.02-1.04)
History of diabetes mellitus	4.16	1.35 (1.17-1.55)
NYHA functional class	3.38	0.79 (0.68-0.90)
Heart rate	2.51	0.99 (0.986-0.998)
Use of digoxin	2.51	1.22 (1.04-1.43)
Use of an ICD	2.37	1.33 (1.02-1.47)
Use of CRT	2.18	1.22 (1.05-1.69)
eGFR	2.18	0.995 (0.992-1.0)
Ejection fraction	2.06	1.01 (1.0-1.02)
White race	2.01	1.21 (1.0-1.45)
History of hospitalization for heart failure	1.98	0.87 (0.76-1.0)

*Other model covariates which were not significant included: history of myocardial infarction, left ventricular ejection fraction, blood pressure, sex, body mass index, use of angiotensin-converting enzyme inhibitor, angiotensin receptor blocker, beta-blocker, magnetic resonance angiography, or diuretic, N-terminal pro-B-type natriuretic peptide, and B-type natriuretic peptide.
 Abbreviations as in Table 1.

influenza vaccination rates, with rates substantially higher in Western Europe, the United States, and Canada compared to Asia. However, even in the United States, despite strong recommendations from the CDC and a science advisory statement published by the American Heart Association advocating for annual vaccination, vaccination rates were only 53%

in this high-risk population (5,12). Aside from country, the most significant predictors of vaccination included older age, history of diabetes mellitus, lower NYHA functional class, lower heart rate, use of digoxin, and use of either an implantable cardioverter-defibrillator or cardiac resynchronization therapy. Influenza vaccination was associated with lower all-cause mortality even when adjusted for the propensity to receive influenza vaccine. Vaccination did not affect the efficacy of LCZ696 (sacubitril/valsartan).

There are limited data on influenza vaccination rates in patients with heart failure worldwide. In the United States, influenza vaccination rates in patients with heart failure have ranged from 25% to approximately 76%, depending on the population studied (13-15). In one study of patients with heart failure who were mostly indigent or had Medicare or Medicaid, baseline rates were 28.3% prior to a vaccination campaign program, and improved to 50.3% after the program (14). In an analysis of the impact of American Heart Association’s Get With The Guidelines-Heart Failure “Plus” program, which recognized hospitals for additional quality measures such as influenza vaccination, the increase in influenza vaccination rates slowed following program implementation compared to years leading up to the program, although baseline vaccination rates were greater than 50% (13). The reasons for poor influenza vaccine uptake in the heart failure population remain unclear, but include factors such as reduced accessibility to vaccination clinics in rural areas, cost of



vaccination if uninsured or if vaccination programs are not offered through employers, limited knowledge regarding the benefits of vaccination, mistrust of ingredients contained in the vaccine, or the misconception that influenza vaccination will cause influenza infection (14,16).

We found that the most important factor influencing vaccination was country. We observed low vaccination rates among Asian countries as previously reported, which may be due to factors such as competing health care priorities and inadequate resources, particularly in developing countries, incomplete region-specific data regarding influenza vaccine effectiveness, or differing practice patterns between regions (17-19). Older age, white race, and

concomitant diabetes mellitus were also significant predictors of vaccination, potentially due to increased health care utilization or improved access to health care (20). Country-specific GDP appeared to be associated with per-country vaccination rates, suggesting that socioeconomic status may play a role in vaccination, although these findings should be interpreted with caution, as we did not have participant-specific socioeconomic data and these factors can vary widely within countries.

We found that patients who received influenza vaccination had lower all-cause mortality, even when adjusting for the propensity to receive vaccination. This finding is consistent with other observational studies that have similarly reported lower rates of death in individuals receiving influenza vaccination, including a retrospective analysis of over 100,000 patients with heart failure from the Veterans Health Administration (15), and a prospective cohort analysis of patients hospitalized for heart failure (21). Despite the adjustment for the propensity to receive influenza vaccine, the observed association between influenza vaccination and lower mortality may simply be indicative of better access to health care, improved surveillance, or ambulatory independence of vaccine recipients, and does not prove that influenza vaccination reduces mortality in this population. As we observed substantial differences between those who did and did not receive vaccine, we cannot rule out the possibility that unmeasured confounding for which

TABLE 4 Association Between Influenza Vaccination and Outcomes

Outcome	Unadjusted		Propensity Adjusted	
	HR	95% CI	HR	95% CI
Death	0.81	0.71-0.92	0.82	0.70-0.96
Cardiovascular death or heart failure hospitalization	0.91	0.81-1.01	0.93	0.81-1.06
Cardiopulmonary or influenza-related hospitalization or death	1.11	1.02-1.20	0.99	0.89-1.10
All-cause hospitalization	1.50	1.39-1.61	1.07	0.97-1.18

CI = confidence interval; HR = hazard ratio.

we are not able to adjust may contribute to the observed findings among influenza vaccine recipients.

That influenza vaccination was associated with a higher unadjusted rate of hospitalization of any type, but not an increased risk of death, suggests that in the PARADIGM-HF trial, influenza vaccination was a potential surrogate for higher level of and improved access to health care, evidenced by more hospitalizations, for any given severity of illness, among individuals who received influenza vaccine. The fact that the risk for hospitalization was substantially altered following propensity adjustment implies that factors that influence the likelihood of vaccination might also influence rates of hospitalization. Nevertheless, other large, but more geographically homogenous, observational studies have shown associations between influenza vaccination and reduced risk for hospitalizations (22,23).

STUDY LIMITATIONS. Several additional limitations of this analysis should be noted. First, we only had vaccination information during a 12-month period in the trial, and as such could not examine associations between multiple year receipt of influenza vaccination and clinical outcomes, as these data were not collected. Influenza vaccination history was collected by site personnel via a case report form, and may be subject to recall bias. Additionally, we did not collect information about the type of vaccine participants received (high dose, quadrivalent, adjuvant), therefore we were not able to explore whether certain vaccine formulations were more strongly associated with better outcomes. Patients with heart failure exhibited blunted immune responses to standard dose trivalent influenza vaccination in previous studies (24,25), and use of a higher dose of influenza vaccine resulted in enhanced antibody titers compared to a standard dose formulation (26). However, the vaccine formulation that portends the greatest protection against influenza-related complications remains unclear.

CONCLUSION

In a cohort of patients with heart failure and reduced ejection fraction who were well managed on guideline

directed medical therapy, we observed significant regional variation in rates of influenza vaccination, despite well-publicized recommendations from public health organizations advocating for annual immunization in this high-risk population. Recipients of influenza vaccination tended to be older and of Caucasian heritage, and more commonly had other comorbidities that may necessitate closer medical follow up. Influenza vaccination did not affect the efficacy of LCZ696, but was associated with lower all-cause mortality, even after adjustment for the propensity to receive influenza vaccination, although whether this association was causal cannot be determined from these observational data.

REPRINT REQUESTS AND CORRESPONDENCE: Dr. Scott D. Solomon, Cardiovascular Division, Brigham and Women's Hospital, 75 Francis Street, Boston, Massachusetts 02445. E-mail: ssolomon@rics.bwh.harvard.edu.

PERSPECTIVES

COMPETENCY IN MEDICAL KNOWLEDGE 1: Influenza vaccination is recommended on an annual basis in patients with heart failure and may be associated with reduced mortality.

COMPETENCY IN MEDICAL KNOWLEDGE 2: Health care providers should educate patients on the benefits of annual influenza vaccination and provide opportunities for vaccination in clinic settings.

TRANSLATIONAL OUTLOOK 1: Future studies should examine associations between multiple-year influenza vaccination and cardiovascular outcomes in patients with heart failure.

TRANSLATIONAL OUTLOOK 2: Although annual influenza vaccination is recommended by clinical guidelines, it is not known which specific influenza vaccine (trivalent, high dose, quadrivalent) may be most beneficial in this high-risk population.

TRANSLATIONAL OUTLOOK 3: The exact mechanisms by which influenza vaccination may lead to improved outcomes in patients with heart failure requires further study.

REFERENCES

1. Mertz D, Kim TH, Johnstone J, et al. Populations at risk for severe or complicated influenza illness: systematic review and meta-analysis. *BMJ (Clin Res Ed)* 2013;347:f5061.
2. Smeeth L, Thomas SL, Hall AJ, Hubbard R, Farrington P, Vallance P. Risk of myocardial infarction and stroke after acute infection or vaccination. *N Engl J Med* 2004;351:2611-8.
3. Warren-Gash C, Smeeth L, Hayward AC. Influenza as a trigger for acute myocardial infarction or death from cardiovascular disease: a systematic review. *Lancet Infect Dis* 2009;9:601-10.
4. Sandoval C, Walter SD, Krueger P, et al. Risk of hospitalization during influenza season among a cohort of patients with congestive heart failure. *Epidemiology and Infection* 2007;135:574-82.
5. Grohskopf LA, Olsen SJ, Sokolow LZ, et al. Prevention and control of seasonal influenza with vaccines: recommendations of the Advisory Committee on Immunization Practices (ACIP) – United States, 2014-15 influenza season. *MMWR Morb Mortal Wkly Rep* 2014;63:691-7.
6. Yancy CW, Jessup M, Bozkurt B, et al. 2013 ACCF/AHA guideline for the management of heart

- failure: a report of the American College of Cardiology Foundation/American Heart Association Task Force on Practice Guidelines. *J Am Coll Cardiol* 2013;62:e147-239.
7. Udell JA, Zawi R, Bhatt DL, et al. Association between influenza vaccination and cardiovascular outcomes in high-risk patients: a meta-analysis. *JAMA* 2013;310:1711-20.
 8. Lainscak M, Cleland JG, Lenzen MJ, et al. Non-pharmacologic measures and drug compliance in patients with heart failure: data from the EuroHeart Failure Survey. *Am J Cardiol* 2007;99:31-7D.
 9. Corrales-Medina VF, Alvarez KN, Weissfeld LA, et al. Association between hospitalization for pneumonia and subsequent risk of cardiovascular disease. *JAMA* 2015;313:264-74.
 10. McMurray JJ, Packer M, Desai AS, et al. Angiotensin-neprilysin inhibition versus enalapril in heart failure. *N Engl J Med* 2014;371:993-1004.
 11. McMurray JJ, Packer M, Desai AS, et al. Dual angiotensin receptor and neprilysin inhibition as an alternative to angiotensin-converting enzyme inhibition in patients with chronic systolic heart failure: rationale for and design of the Prospective comparison of ARNI with ACEI to Determine Impact on Global Mortality and morbidity in Heart Failure trial (PARADIGM-HF). *Eur J Heart Fail* 2013;15:1062-73.
 12. Davis MM, Taubert K, Benin AL, et al. Influenza vaccination as secondary prevention for cardiovascular disease: a science advisory from the American Heart Association/American College of Cardiology. *J Am Coll Cardiol* 2006;48:1498-502.
 13. Heidenreich PA, Zhao X, Hernandez AF, et al. Impact of an expanded hospital recognition program for heart failure quality of care. *J Am Heart Assoc* 2014;3:e000950.
 14. Hebert K, Marzouka G, Arcement L, et al. Prevalence of vaccination rates in systolic heart failure: a prospective study of 549 patients by age, race, ethnicity, and sex in a heart failure disease management program. *Congest Heart Fail* 2010;16:278-83.
 15. Wu WC, Jiang L, Friedmann PD, Trivedi A. Association between process quality measures for heart failure and mortality among US veterans. *Am Heart J* 2014;168:713-20.
 16. Armstrong K, Berlin M, Schwartz JS, Probert K, Ubel PA. Barriers to influenza immunization in a low-income urban population. *Am J Prev Med* 2001;20:21-5.
 17. Zhou L, Su Q, Xu Z, et al. Seasonal influenza vaccination coverage rate of target groups in selected cities and provinces in China by season (2009/10 to 2011/12). *PLoS ONE* 2013;8:e73724.
 18. Chang YC, Huang N, Chen LS, Hsu SW, Chou YJ. Factors affecting repeated influenza vaccination among older people in Taiwan. *Vaccine* 2013;31:410-6.
 19. World Health Organization. Health Topics. Influenza. 2015. Available at: <http://www.who.int/topics/influenza/en/>. Accessed October 19, 2015.
 20. Straits-Troster KA, Kahwati LC, Kinsinger LS, Orelan J, Burdick MB, Yevich SJ. Racial/ethnic differences in influenza vaccination in the Veterans Affairs Healthcare System. *Am J Prev Med* 2006;31:375-82.
 21. Kopel E, Klempfner R, Goldenberg I. Influenza vaccine and survival in acute heart failure. *Eur J Heart Fail* 2014;16:264-70.
 22. Nichol KL, Nordin J, Mullooly J, Lask R, Fillbrandt K, Iwane M. Influenza vaccination and reduction in hospitalizations for cardiac disease and stroke among the elderly. *N Engl J Med* 2003;348:1322-32.
 23. Liu IF, Huang CC, Chan WL, et al. Effects of annual influenza vaccination on mortality and hospitalization in elderly patients with ischemic heart disease: a nationwide population-based study. *Prev Med* 2012;54:431-3.
 24. Vardeny O, Sweitzer NK, Detry MA, Moran JM, Johnson MR, Hayney MS. Decreased immune responses to influenza vaccination in patients with heart failure. *J Card Fail* 2009;15:368-73.
 25. Vardeny O, Moran JJ, Sweitzer NK, Johnson MR, Hayney MS. Decreased T-cell responses to influenza vaccination in patients with heart failure. *Pharmacotherapy* 2010;30:10-6.
 26. Van Ermen A, Hermanson MP, Moran JM, Sweitzer NK, Johnson MR, Vardeny O. Double dose vs. standard dose influenza vaccination in patients with heart failure: a pilot study. *Eur J Heart Fail* 2013;15:560-4.
-
- KEY WORDS** chronic heart failure, clinical trial, influenza vaccination
-
- APPENDIX** For a supplemental figure, please see the online version of this article.