

ORIGINAL INVESTIGATIONS

Influence of Sacubitril/Valsartan (LCZ696) on 30-Day Readmission After Heart Failure Hospitalization



Akshay S. Desai, MD, MPH,^a Brian L. Claggett, PhD,^a Milton Packer, MD,^b Michael R. Zile, MD,^c Jean L. Rouleau, MD,^d Karl Swedberg, MD,^{e,f} Victor Shi, MD,^g Martin Lefkowitz, MD,^g Randall Starling, MD,^h John Teerlink, MD,ⁱ John J.V. McMurray, MD,^j Scott D. Solomon, MD,^a for the PARADIGM-HF Investigators

JACC JOURNAL CME

This article has been selected as the month's *JACC* Journal CME activity, available online at <http://www.acc.org/jacc-journals-cme> by selecting the CME tab on the top navigation bar.

Accreditation and Designation Statement

The American College of Cardiology Foundation (ACCF) is accredited by the Accreditation Council for Continuing Medical Education (ACCME) to provide continuing medical education for physicians.

The ACCF designates this Journal-based CME activity for a maximum of 1 *AMA PRA Category 1 Credit(s)*. Physicians should only claim credit commensurate with the extent of their participation in the activity.

Method of Participation and Receipt of CME Certificate

To obtain credit for *JACC* CME, you must:

1. Be an ACC member or *JACC* subscriber.
2. Carefully read the CME-designated article available online and in this issue of the journal.
3. Answer the post-test questions. At least 2 out of the 3 questions provided must be answered correctly to obtain CME credit.
4. Complete a brief evaluation.
5. Claim your CME credit and receive your certificate electronically by following the instructions given at the conclusion of the activity.

CME Objective for This Article: After reading this article, the reader should be able to: 1) define the burden of readmissions after heart failure hospitalization in a contemporary population with heart failure and reduced ejection fraction; 2) explain the rationale for targeting early readmissions after heart failure hospitalization as a quality metric; and 3) compare the

impact of different pharmacologic therapies for heart failure on rates of readmission after heart failure hospitalization.

CME Editor Disclosure: *JACC* CME Editor Ragavendra R. Baliga, MD, FACC, has reported that he has no financial relationships or interests to disclose.

Author Disclosures: The PARADIGM-HF Study was funded by Novartis AG. Dr. Desai has consulted for Novartis, Merck, Sanofi, Janssen, Relypsa, and St. Jude Medical. Dr. Packer has consulted for Admittance, Amgen, AstraZeneca, Bayer, BioControl, Boehringer Ingelheim, Celyad, Cardiorentis, Daiichi-Sankyo, Novartis, Takeda, ZS Pharma, GlaxoSmithKline, Pfizer, Sanofi, Cytokinetics, Cardiokinetix, Janssen, and CardioMEMS. Dr. Swedberg has received a grant from Servier; and has consulted for AstraZeneca, Novartis, Amgen, and Servier. Drs. Shi and Lefkowitz are employees of Novartis Pharmaceuticals Corporation. Dr. Teerlink has received research grants from Amgen, Bayer, Cytokinetics, Mast Therapeutics, Novartis, and Trevena; and has consulted for Amgen, Bayer, Cytokinetics, Mast Therapeutics, Novartis, Relypsa, Trevena, and ZS Pharma. Dr. McMurray's employer, University of Glasgow, was paid by Novartis for his time spent as cochairman of the PARADIGM-HF trial. Drs. Zile, Rouleau, Starling, and Solomon have consulted for or received research support from Novartis. Dr. Claggett has reported that he has no relationships relevant to the contents of this paper to disclose.

Medium of Participation: Print (article only); online (article and quiz).

CME Term of Approval

Issue Date: July 19, 2016

Expiration Date: July 18, 2017



Listen to this manuscript's audio summary by *JACC* Editor-in-Chief Dr. Valentin Fuster.



From the ^aCardiovascular Division, Brigham and Women's Hospital, Boston, Massachusetts; ^bBaylor Heart and Vascular Institute, Baylor University Medical Center, Dallas, Texas; ^cMedical University of South Carolina and Ralph H. Johnston Veterans Administration Medical Center, Charleston, South Carolina; ^dInstitut de Cardiologie, Université de Montréal, Montreal, Quebec, Canada; ^eDepartment of Molecular and Clinical Medicine, University of Gothenburg, Gothenburg, Sweden; ^fNational Heart and Lung Institute, Imperial College, London, United Kingdom; ^gNovartis Pharmaceuticals Corporation, East Hanover, New Jersey; ^hCardiology, Cleveland Clinic, Cleveland, Ohio; ⁱCardiology, Veterans Affairs Medical Center, San Francisco, California; and the ^jBritish Heart Foundation Cardiovascular Research Center, University of Glasgow, Glasgow, United Kingdom. The PARADIGM-HF Study was funded by Novartis AG. Dr. Desai has consulted for Novartis, Merck, Sanofi, Janssen, Relypsa, and St. Jude Medical. Dr. Packer has consulted for Admittance, Amgen, AstraZeneca, Bayer, BioControl, Boehringer Ingelheim, Celyad, Cardiorentis, Daiichi-Sankyo, Novartis, Takeda, ZS Pharma, GlaxoSmithKline, Pfizer, Sanofi, Cytokinetics, Cardiokinetix, Janssen, and

Influence of Sacubitril/Valsartan (LCZ696) on 30-Day Readmission After Heart Failure Hospitalization

Akshay S. Desai, MD, MPH,^a Brian L. Claggett, PhD,^a Milton Packer, MD,^b Michael R. Zile, MD,^c Jean L. Rouleau, MD,^d Karl Swedberg, MD,^{e,f} Victor Shi, MD,^g Martin Lefkowitz, MD,^g Randall Starling, MD,^h John Teerlink, MD,ⁱ John J.V. McMurray, MD,^j Scott D. Solomon, MD,^a for the PARADIGM-HF Investigators

ABSTRACT

BACKGROUND Patients with heart failure (HF) are at high risk for hospital readmission in the first 30 days following HF hospitalization.

OBJECTIVES This study sought to determine if treatment with sacubitril/valsartan (LCZ696) reduces rates of hospital readmission at 30-days following HF hospitalization compared with enalapril.

METHODS We assessed the risk of 30-day readmission for any cause following investigator-reported hospitalizations for HF in the PARADIGM-HF trial, which randomized 8,399 participants with HF and reduced ejection fraction to treatment with LCZ696 or enalapril.

RESULTS Accounting for multiple hospitalizations per patient, there were 2,383 investigator-reported HF hospitalizations, of which 1,076 (45.2%) occurred in subjects assigned to LCZ696 and 1,307 (54.8%) occurred in subjects assigned to enalapril. Rates of readmission for any cause at 30 days were 17.8% in LCZ696-assigned subjects and 21.0% in enalapril-assigned subjects (odds ratio: 0.74; 95% confidence interval: 0.56 to 0.97; $p = 0.031$). Rates of readmission for HF at 30-days were also lower in subjects assigned to LCZ696 (9.7% vs. 13.4%; odds ratio: 0.62; 95% confidence interval: 0.45 to 0.87; $p = 0.006$). The reduction in both all-cause and HF readmissions with LCZ696 was maintained when the time window from discharge was extended to 60 days and in sensitivity analyses restricted to adjudicated HF hospitalizations.

CONCLUSIONS Compared with enalapril, treatment with LCZ696 reduces 30-day readmissions for any cause following discharge from HF hospitalization. (J Am Coll Cardiol 2016;68:241-8) © 2016 by the American College of Cardiology Foundation.

Despite considerable progress in the development of effective medical therapy, patients with heart failure (HF) remain at high risk for recurrent hospitalization (1). Among those >65 years of age, roughly 1 in 4 patients is readmitted within 30 days of hospitalization and nearly one-half are readmitted within 6 months (2). High costs associated with in-hospital care threaten a doubling of health care expenditure on HF by 2030 (3). This anticipated financial burden, coupled with the concern that many early readmissions may be preventable by improving the quality

of in-hospital care and care transitions (4,5) has focused attention on HF readmission rates as a metric of quality of care. In 2009, the Centers for Medicare & Medicaid Services began public reporting of all-cause readmission rates in the United States, and since 2010, U.S. hospitals with higher than expected risk-standardized readmission rates at 30 days are at risk for substantial financial penalties as part of the Hospital Readmissions Reduction Program.

In the PARADIGM-HF (Prospective Comparison of ARNI with an ACE-Inhibitor to Determine Impact on

CardioMEMS. Dr. Swedberg has received a grant from Servier; and has consulted for Astrazeneca, Novartis, Amgen, and Servier. Drs. Shi and Lefkowitz are employees of Novartis Pharmaceuticals Corporation. Dr. Teerlink has received research grants from Amgen, Bayer, Cytokinetics, Mast Therapeutics, Novartis, and Trevena; and has consulted for Amgen, Bayer, Cytokinetics, Mast Therapeutics, Novartis, Relypsa, Trevena, and ZS Pharma. Dr. McMurray's employer, University of Glasgow, was paid by Novartis for his time spent as cochairman of the PARADIGM-HF trial. Drs. Zile, Rouleau, Starling, and Solomon have consulted for or received research support from Novartis. Dr. Claggett has reported that he has no relationships relevant to the contents of this paper to disclose.

Manuscript received February 15, 2016; revised manuscript received April 9, 2016, accepted April 12, 2016.

Global Mortality and Morbidity in Heart Failure) trial, treatment with the angiotensin receptor neprilysin inhibitor sacubitril/valsartan (LCZ696) was associated with a 20% reduction in the primary composite endpoint of cardiovascular death or HF hospitalization compared with enalapril (6). Moreover, LCZ696 reduced both the time to first hospitalization for HF and the cumulative burden of HF hospitalizations during the course of the trial (7). In this analysis, we sought to further assess the effect of LCZ696 on the rates of all-cause 30-day readmission after HF hospitalization.

SEE PAGE 249

METHODS

PARADIGM-HF TRIAL. As previously reported (8), the PARADIGM-HF study was a randomized, double-blind, prospective comparison of LCZ696 with enalapril in subjects with chronic HF, New York Heart Association functional class II to IV symptoms, and left ventricular ejection fraction of ≤40% (subsequently lowered to ≤35% by an amendment to the protocol) treated with guideline-recommended medical therapy. Before randomization, all subjects underwent a sequential, single-blind run-in phase to ensure tolerability of both study drugs at target doses. Subjects who successfully completed the run-in phase (n = 8,399) were randomly allocated in 1:1 fashion to double-blind treatment with either enalapril, 10 mg twice daily or LCZ696, 200 mg twice-daily (sacubitril/valsartan, 97/103 mg twice-daily). Ethics committee approval was obtained for the study at each site, and written informed consent was obtained from all subjects before participation.

STATISTICAL ANALYSES. Baseline characteristics of patients who were hospitalized and subsequently discharged were analyzed by treatment arm, using Student *t* tests and Pearson chi-squared test for continuous and categorical data, respectively. To incorporate data from multiple HF hospitalizations per patient, the primary unit of subsequent analysis was hospitalizations, rather than patients. We compared rates of 30-day readmission after index HF hospitalization by treatment assignment during the median 27-month period of randomized follow-up in the PARADIGM-HF trial. To replicate the approach used in the Hospital Readmissions Reduction Program, all investigator-reported hospitalizations for HF were considered as potential index HF hospitalizations, not merely those that were adjudicated positively by the Clinical Endpoints Committee (CEC).

Those in which patients died before discharge, were admitted and discharged on the same day, or for which discharge dates were unavailable were excluded. Discharges for which readmission status was not able to be determined because of study discontinuation were omitted from the analysis. When conflicting admission and/or discharge dates were encountered, we used the widest hospitalization interval from among the conflicting dates (i.e., the earliest admission date and the latest discharge date). In keeping with the Medicare methodology, a readmission was defined as inpatient admission to an acute care facility for any cause within 30-days from the date of discharge of an index HF hospitalization.

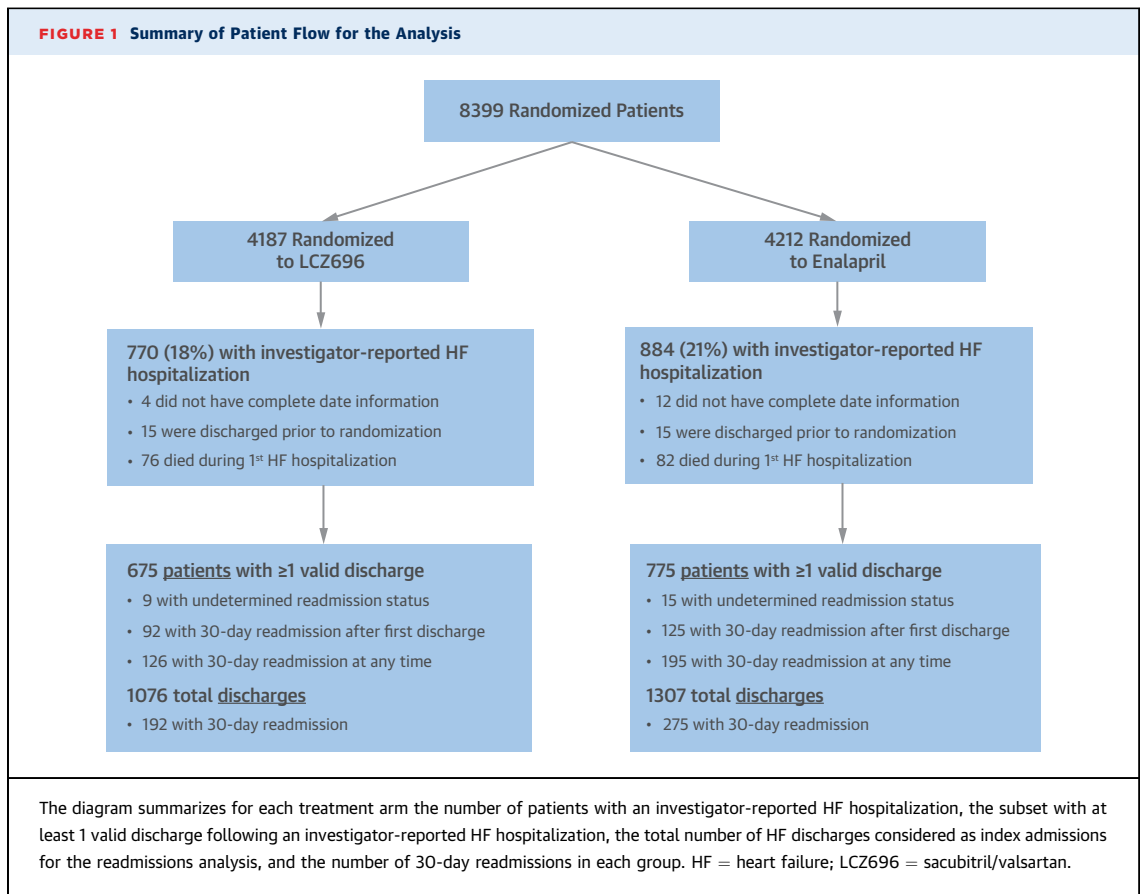
ABBREVIATIONS AND ACRONYMS

- CEC** = Clinical Endpoints Committee
- CI** = confidence interval
- HF** = heart failure
- LCZ696** = sacubitril/valsartan
- OR** = odds ratio

TABLE 1 Baseline Characteristics of Patients With Discharge After Investigator-Reported Heart Failure Hospitalization, by Treatment Assignment

	Hospitalized for HF		p Value (Enalapril vs. LCZ)
	LCZ696 (n = 675)	Enalapril (n = 775)	
Age, yrs	64.4 ± 11.7	64.3 ± 11.4	0.82
Female	17	19	0.29
White race	69	67	0.50
BMI, kg/m ²	28.5 ± 5.8	28.7 ± 5.8	0.45
SBP, mm Hg	121 ± 16	121 ± 16	0.74
Heart rate, bpm	74 ± 12	74 ± 13	0.91
Creatinine, mg/dl	1.2 ± 0.3	1.2 ± 0.3	0.66
Ischemic CMP	60	60	0.91
Ejection fraction, %	29 ± 6	29 ± 7	0.92
Median NT-proBNP, pg/ml	2,270 (1,178-4,749)	2,000 (1,079-4,587)	0.10
NYHA class			0.16
I	3	4	
II	65	69	
III	30	26	
IV	2	1	
Past medical history			
Hypertension	74	75	0.83
Diabetes	44	43	0.81
Hospitalization for HF	74	74	0.95
MI	48	45	0.29
Stroke	11	11	0.96
Atrial fibrillation	39	45	0.015
Treatment at randomization			
Diuretics	87	87	0.70
Digitalis	31	35	0.08
Beta-blocker	92	93	0.79
MRA	57	56	0.68
ICD	21	20	0.92
CRT	10	9	0.44

Values are mean ± SD, %, or median (interquartile range).
 BMI = body mass index; CMP = cardiomyopathy; CRT = cardiac resynchronization therapy; HF = heart failure; ICD = implantable cardioverter-defibrillator; LCZ696 = sacubitril/valsartan; MI = myocardial infarction; MRA = mineralocorticoid receptor antagonist; NT-proBNP = N-terminal pro-B-type natriuretic peptide; NYHA = New York Heart Association; SBP = systolic blood pressure.



Odds ratios (ORs) for readmission in LCZ696-versus enalapril-treated patients were calculated in random-effects logistic regression models to account for multiple HF discharge windows experienced by the same patient. Sensitivity analyses were conducted examining only patients >65 years of age, examining all-cause readmissions at 60 days, examining only cause-specific readmission for HF, restricting the analysis to patients enrolled in the United States (where financial penalties for 30-day readmissions after HF hospitalization are most applicable), and using only the subset of investigator-reported HF hospitalizations confirmed by the CEC. Sensitivity analyses restricted to the first HF discharge for each patient used standard logistic regression models.

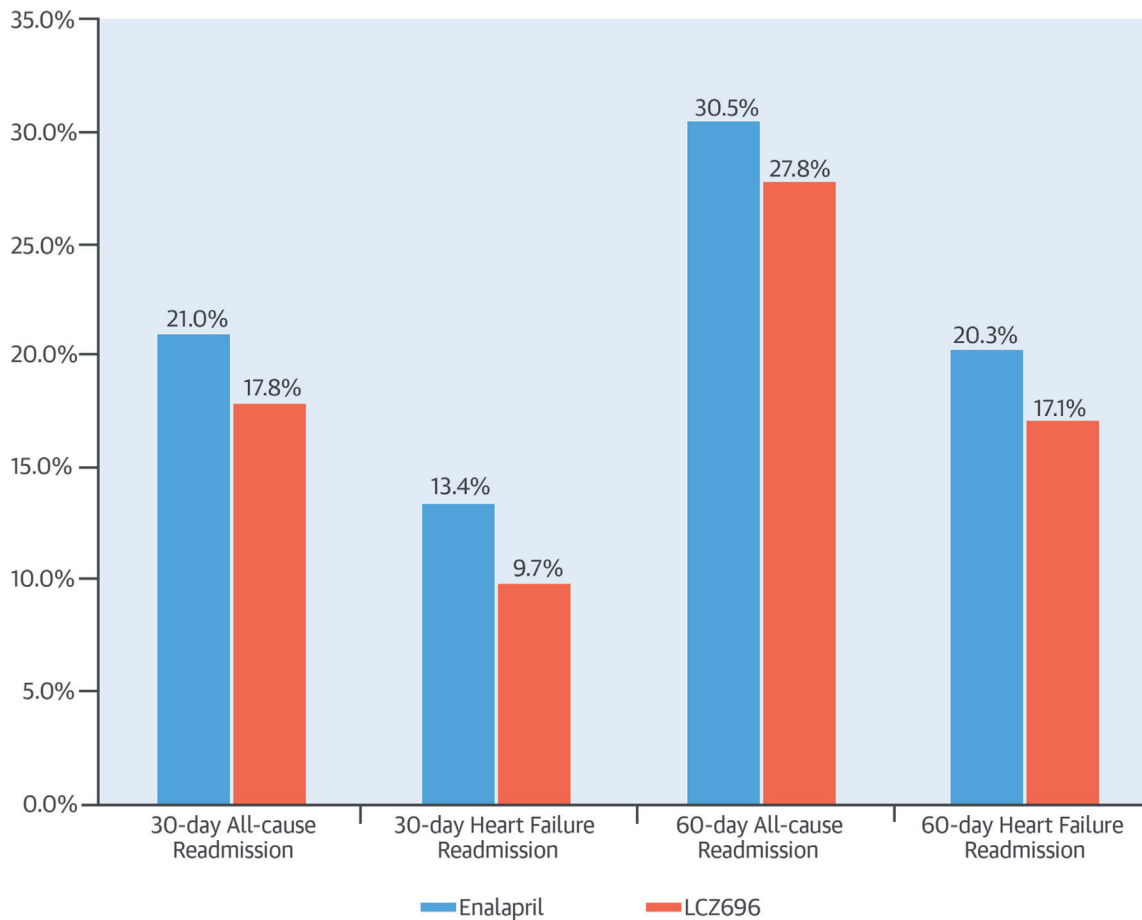
RESULTS

Of 8,399 randomized subjects, 1,654 (19.7%) experienced an investigator-reported HF hospitalization. Excluding those hospitalizations for which complete date information was unavailable, or the patient died while hospitalized, there were 1,450 (17.3%) subjects who survived at least 1 HF hospitalization including

675 (16.1%) assigned to LCZ696 and 775 (18.4%) assigned to enalapril. Among patients hospitalized at least once for HF, patient characteristics were similar at baseline between treatment groups (Table 1).

Accounting for multiple hospitalizations per patient, there were 2,383 investigator-reported HF hospitalizations, of which 1,076 (45.2%) occurred in subjects assigned to LCZ696 and 1,307 (54.8%) occurred in subjects assigned to enalapril (Figure 1). Length of stay during index HF hospitalization did not differ by treatment arm (7.5 days vs. 7.0 days, sacubitril/valsartan vs. enalapril; $p = 0.10$). The number of readmissions per patient is summarized in Online Figure 1 and Online Table 1. Rates of readmission for any cause at 30 days were 17.8% in LCZ696-assigned subjects and 21.0% in enalapril-assigned subjects (OR: 0.74; 95% confidence interval [CI]: 0.56 to 0.97; $p = 0.031$). Rates of readmission for HF at 30 days were also reduced in subjects assigned to LCZ696 (9.7% vs. 13.4%; OR: 0.62; 95% CI: 0.45 to 0.87; $p = 0.006$). The reduction in both all-cause and HF readmissions with LCZ696 was maintained when the time window from discharge was extended to 60 days (all-cause readmissions: 27.8% vs. 30.5%; OR:

CENTRAL ILLUSTRATION Influence of LCZ696 on Readmission: Rates After Investigator-Reported HF Hospitalization According to Treatment Assignment



Desai, A.S. et al. *J Am Coll Cardiol.* 2016;68(3):241-8.

Shown are the proportion of investigator-reported HF hospitalizations associated with readmissions for any cause or for heart failure at 30 days and 60 days following discharge. LCZ696 = sacubitril/valsartan.

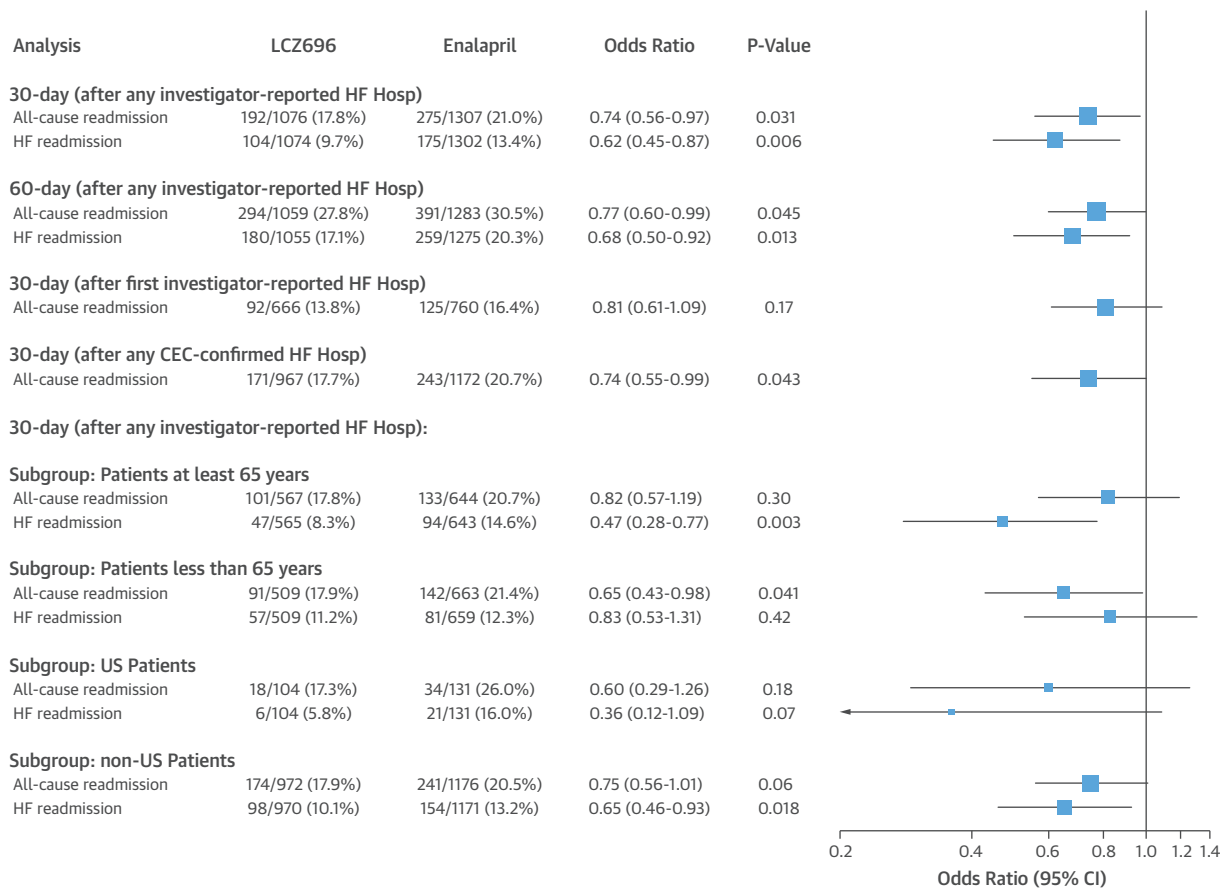
0.77; 95% CI: 0.60 to 0.99; $p = 0.045$) (HF readmissions: 17.1% vs. 20.3%; OR: 0.68; 95% CI: 0.50 to 0.92; $p = 0.01$) (Central Illustration, Figure 2).

The results of sensitivity analyses are reported in Figure 2. Among analyses restricted to CEC-adjudicated HF hospitalizations, 30-day all-cause readmission rates were similarly lower in subjects assigned to LCZ696 (17.7% vs. 20.7%; OR: 0.74; 95% CI: 0.55 to 0.99; $p = 0.043$). Numerically fewer all-cause and HF-related readmissions at 30 days were also noted for LCZ696-assigned subjects 65 years and older (Medicare-eligible, 17.8% vs. 20.7%; OR: 0.82; 95% CI: 0.57 to 1.19; $p = 0.30$) and those enrolled in the United States (17.3% vs. 26.0%; OR: 0.60; 95% CI: 0.29 to 1.26; $p = 0.18$), with more pronounced effect

on HF readmissions in each of these subgroups. The effect of LCZ696 on all-cause and HF readmissions did not differ significantly across regions pre-specified in the primary analysis ($p = 0.81$ for all-cause and $p = 0.09$ for HF readmissions) (Online Figure 2).

DISCUSSION

Among patients with HF and reduced ejection fraction enrolled in the PARADIGM-HF trial, treatment with LCZ696 reduced the cumulative incidence of HF hospitalizations relative to treatment with enalapril. Nearly 1 in 5 HF hospitalizations during the trial was followed by a repeat hospitalization within 30 days, of which more than half were related to recurrent HF.

FIGURE 2 Sensitivity Analyses of Impact of LCZ696 Relative to Enalapril on Readmission Rates After HF Hospitalization

Shown are the proportion of readmissions for any cause or for HF, by treatment arm, along with odds ratios for readmission (LCZ696 vs. enalapril) and 95% CIs, for varying definitions of index HF events (investigator-reported vs. CEC-confirmed), varying time horizons (30 vs. 60 days), and key subgroups of interest. CEC = Clinical Endpoints Committee; CI = confidence interval; Hosp = hospitalization; other abbreviations as in [Figure 1](#).

In this analysis, we noted a 26% lower rate of 30-day readmission for any cause among patients allocated to LCZ696 and a 38% lower rate of 30-day readmission for HF. These differences persisted at 60 days following hospital discharge and were robust in analyses restricted to CEC-adjudicated HF hospitalizations, patients enrolled in the United States, and the subset of Medicare-eligible subjects >65 years of age. These data suggest that LCZ696 is likely to be more effective than enalapril in reducing the risk of early readmission after HF hospitalization.

Recurrent hospitalizations are a primary driver of the burgeoning costs associated with HF care (3) and are a potent marker of risk for subsequent mortality (9,10). Although patients discharged with HF are at risk for readmission well beyond 30 days, the early post-discharge interval is known to be a particularly vulnerable period (11,12). In the United States,

financial penalties imposed as part of the Hospital Readmission Reduction Program have focused considerable attention on improving the quality of pre-discharge education, care transitions, and early post-discharge follow-up to reduce the burden of preventable admissions (13). However, few evidence-based strategies for readmission prevention are available. Guidelines encourage prescription of neurohormonal antagonists before hospital discharge to improve adherence and long-term clinical outcomes in patients with HF and reduced ejection fraction (14), but there are limited data assessing the impact of existing guideline-directed medical therapies on the risk of readmissions in the 30- or 60-day window following discharge. A recent observational study of digoxin prescription before discharge suggested a significant reduction on 30-day readmissions among patients with HF and ejection fraction <45%

(15), but studies examining pre-discharge prescription of angiotensin-converting enzyme inhibitors (16), beta-blockers, (17) and fixed-dose isosorbide dinitrate/hydralazine (18) have not shown similar benefits, despite important effects on mortality.

Early cardiovascular readmissions are frequently caused by recurrent HF decompensation, probably as a consequence of either incomplete decongestion during the index hospital admission or rapid recurrence of congestion in the early post-discharge interval (19). Accordingly, therapeutic approaches that facilitate better management of congestion seem to be effective in reducing readmission rates (20). Our analysis indicates that compared with those treated with enalapril, patients with chronic HF treated with LCZ696 are both less likely to be initially hospitalized for HF decompensation, and less likely to require hospital readmission for any reason within 30 days of hospital discharge. Because angiotensin-converting enzyme inhibitors and angiotensin-receptor blockers have comparable clinical benefits in HF with reduced ejection fraction, it seems likely that the improvement in early post-discharge clinical outcomes is related to the incremental benefit of neprilysin inhibition over renin-angiotensin system antagonism alone, particularly with regard to HF readmissions, which were also lower in LCZ696-treated subjects. This impact on readmissions after HF hospitalization should be viewed in context of the already established 21% reduction in risk of first HF hospitalization compared with enalapril, and provides more granular insight into the 23% reduction in cumulative burden of HF hospitalization that has previously been reported (7). Although the mechanisms by which neprilysin inhibition may help to facilitate readmission reduction early after HF hospitalization remain unclear, these data further support the potential benefits of this approach on slowing the clinical progression of patients surviving with HF.

STUDY LIMITATIONS. This analysis must be viewed in the context of its limitations. First, this was not a pre-specified analysis of the PARADIGM-HF study, and patients were not randomized to treatment with LCZ696 or enalapril at the time of index hospitalization. Accordingly, the apparent differences in readmission rates noted in this analysis could be attributed to differences in the patients who were hospitalized for HF in the 2 treatment groups. However, we noted no significant treatment-related differences in baseline characteristics and indices of HF severity among patients discharged following HF hospitalization (Table 1). To more closely mimic the approach used in the United States to apply financial penalties for early readmissions, our primary analysis

focused on readmissions following investigator-reported HF hospitalizations, which are vulnerable to misclassification; nonetheless, the readmission reductions seen with LCZ696 were consistent in sensitivity analyses limited to HF hospitalizations confirmed by a blinded CEC. Because the risk for readmission persists well beyond 30 days, the focus on early readmissions here may seem shortsighted; however, payers in the United States and Australia have emphasized the rate of 30-day readmissions after HF hospitalization as a key quality metric and U.S. hospitals are increasingly focused on this time point because of the financial penalties for excessive readmissions imposed by Centers for Medicare & Medicaid Services. Consistency in the results for readmission at 60 days and in analyses restricted to Medicare-eligible patients suggests that the benefits of LCZ696 over enalapril are clinically relevant and not simply related to the play of chance.

CONCLUSIONS

Reducing early readmissions after HF hospitalization represents an opportunity to simultaneously improve patient outcomes and reduce the fiscal burden of HF management for hospitals and payers. These data highlighting fewer all-cause and heart-failure readmissions at 30 days during treatment with LCZ696 relative to enalapril provide additional rationale for use of sacubitril/valsartan in preference to enalapril in patients with chronic, symptomatic HF and reduced ejection fraction.

REPRINT REQUESTS AND CORRESPONDENCE: Dr. Scott D. Solomon, Cardiovascular Division, Brigham and Women's Hospital, 75 Francis Street, Boston, Massachusetts 02115. E-mail: ssolomon@rics.bwh.harvard.edu.

PERSPECTIVES

COMPETENCY IN PATIENT CARE AND PROCEDURAL

SKILLS: Thirty-day readmission is common among patients hospitalized with heart failure and rates are lower in those treated with sacubitril/valsartan than in patients treated with enalapril.

TRANSLATIONAL OUTLOOK: Future studies should seek to clarify the mechanism by which composite angiotensin receptor-neprilysin inhibition exerts benefit beyond the acute hospital phase of treatment compared with angiotensin-converting enzyme inhibition alone in patients with progressive heart failure and reduced ejection fraction.

REFERENCES

- Heidenreich PA, Sahay A, Kapoor JR, Pham MX, Massie B. Divergent trends in survival and readmission following a hospitalization for heart failure in the Veterans Affairs health care system 2002 to 2006. *J Am Coll Cardiol* 2010;56:362-8.
- Chen J, Ross JS, Carlson MD, et al. Skilled nursing facility referral and hospital readmission rates after heart failure or myocardial infarction. *Am J Med* 2012;125:100.e1-9.
- Heidenreich PA, Albert NM, Allen LA, et al. Forecasting the impact of heart failure in the United States: a policy statement from the American Heart Association. *Circ Heart Fail* 2013;6:606-19.
- Madigan EA, Gordon NH, Fortinsky RH, et al. Rehospitalization in a national population of home health care patients with heart failure. *Health Serv Res* 2012;47:2316-38.
- Van Walraven C, Bennett C, Jennings A, et al. Proportion of hospital readmissions deemed avoidable: a systematic review. *CMAJ* 2011;183:E391-402.
- McMurray JJ, Packer M, Desai AS, et al., for the PARADIGM-HF Investigators and Committees. Angiotensin-neprilysin inhibition versus enalapril in heart failure. *N Engl J Med* 2014;371:993-1004.
- Packer M, McMurray JJV, Desai AS, et al. Angiotensin receptor neprilysin inhibition compared with enalapril on the risk of clinical progression in surviving patients with heart failure. *Circulation* 2015;131:54-61.
- McMurray JJ, Packer M, Desai AS, et al., for the PARADIGM-HF Committees and Investigators. Dual angiotensin receptor and neprilysin inhibition as an alternative to angiotensin-converting enzyme inhibition in patients with chronic systolic heart failure: rationale for and design of the Prospective comparison of ARNI with ACEI to Determine Impact on Global Mortality and morbidity in Heart Failure trial (PARADIGM-HF). *Eur J Heart Fail* 2013;15:1062-73.
- Bello NA, Claggett B, Desai AS, et al. Influence of previous heart failure hospitalization on cardiovascular events in patients with reduced and preserved ejection fraction. *Circ Heart Fail* 2014;7:590-5.
- Setoguchi S, Stevenson LW, Schneeweiss S. Repeated hospitalizations predict mortality in the community population with heart failure. *Am Heart J* 2007;154:260-6.
- Solomon SD, Dobson J, Pocock S, et al., for the Candesartan in Heart failure: Assessment of Reduction in Mortality and morbidity (CHARM) Investigators. Influence of nonfatal hospitalization for heart failure on subsequent mortality in patients with chronic heart failure. *Circulation* 2007;116:1482-7.
- Chun S, Tu JV, Wijeyesundera HC, et al. Lifetime analysis of hospitalizations and survival of patients newly-admitted with heart failure. *Circ Heart Fail* 2012;5:414-21.
- Albert NM, Barnason S, Deswal A, et al. Transitions of care in heart failure: a scientific statement from the American Heart Association. *Circ Heart Fail* 2015;8:384-409.
- Yancy CW, Jessup M, Bozkurt B, et al. 2013 ACCF/AHA guideline for the management of heart failure: a report of the American College of Cardiology Foundation/American Heart Association Task Force on practice guidelines. *J Am Coll Cardiol* 2013;62:e147-239.
- Ahmed A, Bourge RC, Fonarow GC, et al. Digoxin use and lower 30-day all-cause readmission for Medicare beneficiaries hospitalized for heart failure. *Am J Med* 2014;127:61-70.
- Heidenreich PA, Hernandez AF, Yancy CW, et al. Get With The Guidelines program participation, process of care, and outcome for Medicare patients hospitalized with heart failure. *Circ Cardiovasc Qual Outcomes* 2012;5:37-43.
- Bhatia V, Bajaj NS, Sanam K, et al. Beta-blocker use and 30-day all-cause readmission in Medicare beneficiaries with systolic heart failure. *Am J Med* 2015;128:715-21.
- Anand IS, Win S, Rector TS, Cohn JN, Taylor AL. Effect of fixed-dose combination of isosorbide dinitrate and hydralazine on all hospitalizations and on 30-day readmission rates in patients with heart failure: results from the African-American Heart Failure Trial. *Circ Heart Fail* 2014;7:759-65.
- Lala A, McNulty SE, Mentz RJ, et al. Relief and recurrence of congestion during and after hospitalization for acute heart failure: insights from Diuretic Optimization Strategy Evaluation in Acute Decompensated Heart Failure (DOSE-AHF) and Cardiorenal Rescue Study in Acute Decompensated Heart Failure (CARRESS-HF). *Circ Heart Fail* 2014;8:741-8.
- Adamson PB, Abraham WT, Bauman J, Yadav J. Impact of wireless pulmonary artery pressure monitoring on heart failure hospitalizations and all-cause 30-day readmissions in Medicare-eligible patients with NYHA class III heart failure: results from the CHAMPION Trial. *Circulation* 2014;130:A166744.

KEY WORDS hospitalization, neprilysin, readmission, sacubitril/valsartan

APPENDIX For supplemental figures and a table, please see the online version of this article.

CME

Go to <http://www.acc.org/jacc-journals-cme> to take the CME quiz for this article.